



# I494 Project Updates

Ryan Wilson, West Area Manager

I35W Solutions Alliance  
March 14, 2024

# Project Updates

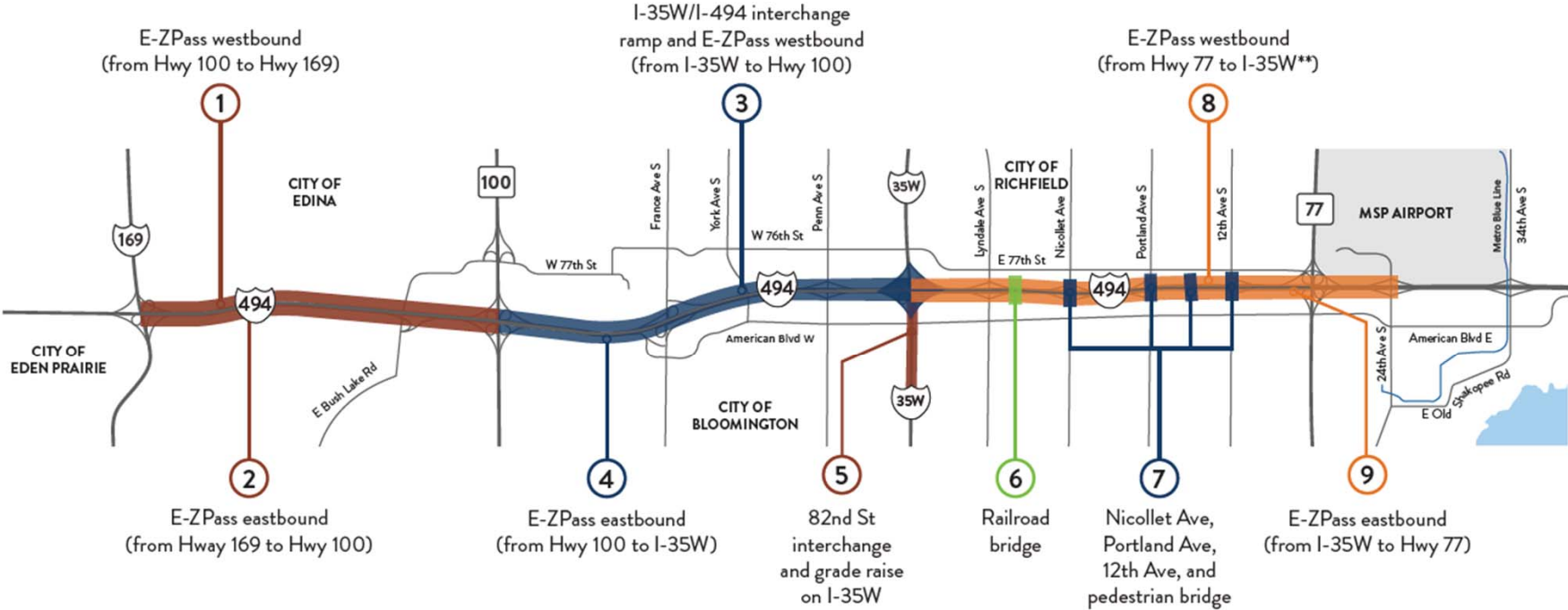
- I-494 Airport to Hwy 169 Project 1
- I-494 Airport to Hwy 169 Phase 2
- I-494 Bridge over the Minnesota River

SP 2785-424  
I-494 Airport to Hwy 169 Project 1

# Corridor Vision

## Implementation Plan

|  |   |   |  |
|--|---|---|--|
| <p><b>Project 1</b><br/>Elements 3, 4, 5 (partial) and 7</p> <p>Letting date - April 2023<br/>Construction duration - 2023 to 2026<br/>\$320M construction let budget \$419M<br/>Remaining priority issues - EA, ROW</p> | <p><b>Project 2</b><br/>Element 6</p> <p>Letting date - TBD but no earlier than 2024<br/>Construction duration - TBD<br/>Cost range - \$10M to \$20M<br/>Remaining priority issues - cost estimate, design (to be done by Fall 2023), ROW, RR coordination, funding</p> | <p><b>Project 3</b><br/>Elements 8 and 9</p> <p>Letting date - TBD<br/>Construction duration - TBD<br/>Cost range - \$60M to \$100M<br/>Remaining priority issues - project development, cost estimate, funding</p> | <p><b>Project 4</b><br/>Elements 1, 2, and 5</p> <p>Letting date - TBD<br/>Construction duration - TBD<br/>Cost range - \$50M to \$90M<br/>Remaining priority issues - project development, cost estimate, funding</p> |
|--|---|---|--|

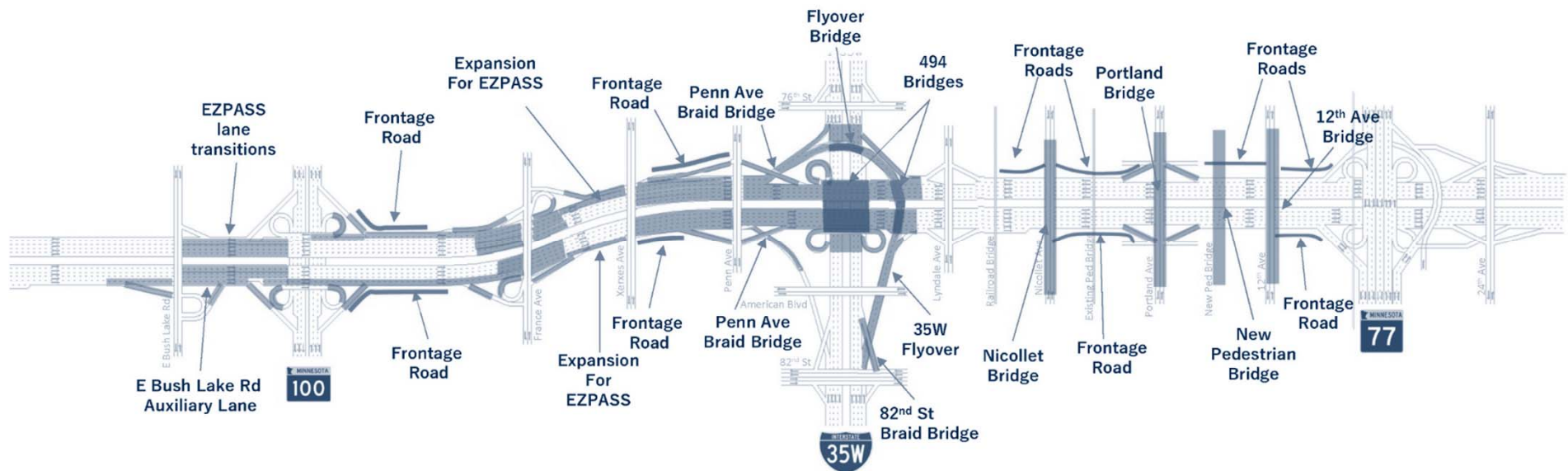


(E-ZPass is formerly known as MnPASS)

\*\*Added capacity begins at 24th Ave with E-ZPass designation just west of TH 77

# Project 1

- Total project cost \$377 million
- E-ZPass in both directions between East Bush Lake Road and I-35W
- Reconstruct I-494/I-35W interchange to turbine design
- Reconfigure access at Nicollet, Portland, and 12<sup>th</sup> Avenues



# Construction Schedule Overview

- 2023
  - Temporary crossovers and widening, EB I-494 near TH 100, north ramps at I-35W
- 2024
  - WB I-494 near TH 100, EB I-494 from TH 100 to I-35W, Chicago Ave pedestrian bridge
- 2025
  - WB I-494 from TH 100 to I-35W, finish I-35W interchange, Portland Ave interchange
- 2026
  - E-ZPass System, Nicollet Ave & 12th Ave Bridges

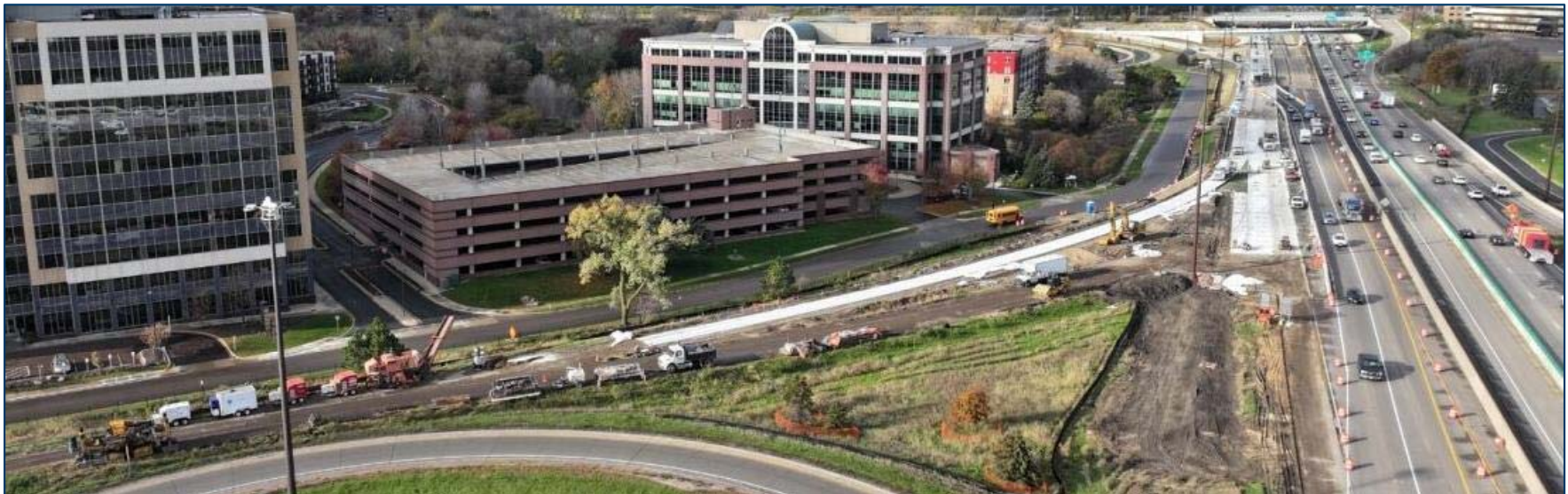
# Maintenance of Traffic Overview

- Maintain 3 lanes each direction on I494 and I35W during peak hours
- I-494 and I-35W closures
  - 24 weekend and 98 overnight allowed in contract
- Ramp closures – variable and project wide
- Reduced lane, shoulder, and bypass geometry
  - 2024 impacts begin nearer to airport



# Work Completed in 2023

- Many design packages prepared and submitted
- Utility relocates began in several areas
- Lots of temporary widening and crossovers, lane shifts
- Permanent grading, drainage, pavement, bridge, and stormwater pond construction began





# Winter 2023-2024 Work

- Complete design of remainder of project
- Some bridge construction and pipe jacking
- Continue with utility relocates
- Public outreach to local businesses and residents

# Public Information

- Public Information Hotline

- [info@i494Construction.com](mailto:info@i494Construction.com)
- 651-583-6435

- Visit the project websites

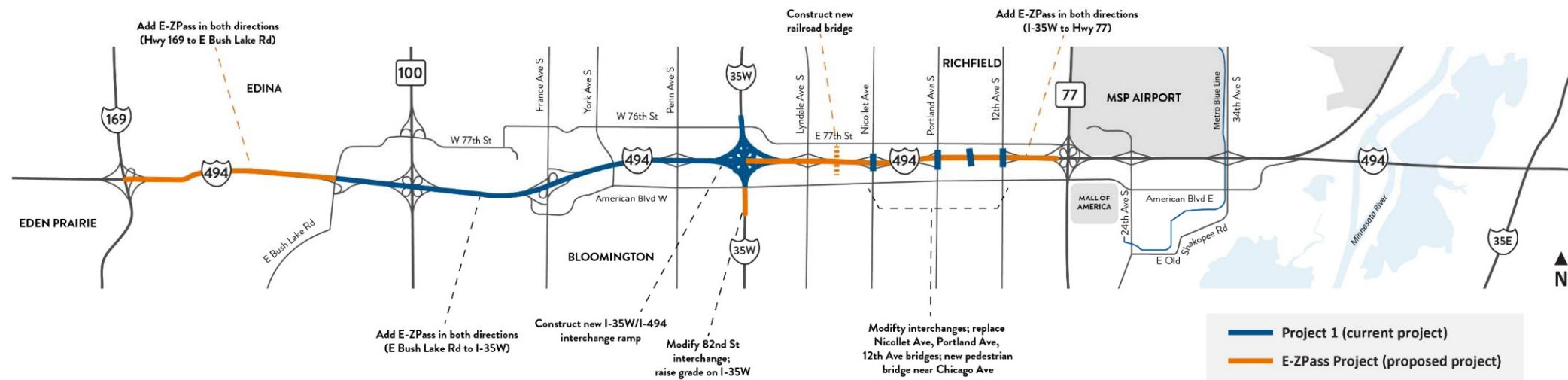
<http://www.dot.state.mn.us/metro/projects/i494-airport-hwy169/> (study)

<http://www.dot.state.mn.us/metro/projects/i494edina-richfield/index.html>  
(construction)

# I-494 Airport to Hwy 169 Phase 2

# Phase 2 Scope

- Phase 2 (orange, proposed project)
- Total project cost estimate \$379 million



# Phase 2 Goals

- Improve mobility: add E-Zpass lanes
- Provide transit and high-occupancy-vehicle advantage
- Modify a key interchange to improve safety: I35W-82<sup>nd</sup> St
- Improve aging assets: replace rail crossing between Lyndale and Nicollet Avenues
- Enhance non-motorized infrastructure: sidewalks and trails on local networks in and across project area



# Phase 2 Status

- Submitted federal Infrastructure Investment and Jobs Act (IIJA) MEGA application for \$227.5M in summer 2023
  - Successful grant would complete vision
- Draft schedule (if successful IIJA MEGA grant)
  - 2024-2025: complete preliminary design, complete re-evaluation of environmental assessment, prepare Design-Build procurement
  - 2026-TBD: construction



# I-494 Bridge over Minnesota River

# Overview

- Location
  - I-494 bridge over the Minnesota River between 24th Ave. in Bloomington and Pilot Knob Rd. in Mendota Heights/Eagan
- Cost
  - \$62 million
- Construction schedule
  - Spring 2023 through summer 2026

# Summary of Work

- Repair pavement on I-494
- Reconstruct the regional trail
- Replace bridge joints
- Repair bridge deck, beam ends and railings
- Reconstruct bearings
- Replace highway lighting
- Repair/replace drainage

# Construction Schedule Overview

- 2023
  - Inside median; some lane closures and shifts
- 2024
  - Construct temporary crossover for WB I494 to EB Hwy 5 and 34<sup>th</sup> Ave
  - WB bridge closed for repairs
  - Traffic reduced to 2 lanes in each direction on EB bridge
  - Surface repairs on pavement and bridges west of river
- 2025
  - EB bridge closed for repairs
  - Traffic reduced to 2 lanes each direction on WB bridge
  - South side river bridge trail closed all summer



# Airport Access Impacts: 2024

- WB I-494 to EB Hwy 5 & 34<sup>th</sup> Ave
  - Closed for up to 2 weeks beginning April 15 for crossover construction and several days end-of-season to restore normal configuration
  - Detour: WB I-494 to 24<sup>th</sup> Ave to EB I-494 to 34<sup>th</sup> Ave or Hwy 5
- WB Hwy 5 to EB I-494 (due to unsafe merge condition)
  - Closed end of April to end of October
  - Detour: EB Hwy 5 to EB Hwy 62 to SB I-35E to EB I-494
- 34<sup>th</sup> Ave entrance to EB I-494 (due to unsafe merge condition)
  - Closed end of April to end of October
  - Detour: EB Hwy 5 to EB Hwy 62 to SB I-35E to EB I-494
- Other ramps remain open

# Airport Access Impacts: Winter 2024-2025

- I-494 mainline
  - Winter conditions will be normal lane configurations
- Ramps
  - Winter conditions will be normal access and configurations

# Airport Access Impacts: 2025

- WB Hwy 5 to EB I-494 (due to bridge workzone)
  - Closed end of April to end of October
  - Detour: EB Hwy 5 to EB Hwy 62 to SB I-35E to EB I-494
- 34<sup>th</sup> Ave entrance to EB I-494 (due to bridge workzone)
  - Closed end of April to end of October
  - Detour: EB Hwy 5 to EB Hwy 62 to SB I-35E to EB I-494
- Other ramps remain open

# Sharing Information

- Construction messaging
  - MnDOT and consultant staff to coordinate both I-494 projects
  - Extensive and varied engagement events and communication tools
  - Coordination with MAC underway
- Construction detour information
  - Maximize use of permanent and temporary digital messages
  - Advanced warning signs seven days in advance

# Other Considerations

- I-494 delays
  - Modeling identified up to 10-15 minute probable delay during rush hour
- Temporary WB I-494 to EB Hwy 5/34<sup>th</sup> Ave ramp is very constrained
  - Requires monitoring and possible adjustments
- Effort to reroute all large/oversize trucks from bridge during construction



# Public Information

- Public Information Hotline
  - [info@i494Construction.com](mailto:info@i494Construction.com)
  - 651-583-6435
- Visit the project website

<https://www.dot.state.mn.us/metro/projects/i494mnrivierbridge/index.html>

# Thank you!

- Ryan Wilson, PE AICP (he/him)  
West Area Manager | Hennepin County  
MnDOT Metro District  
E: [ryan.wilson@state.mn.us](mailto:ryan.wilson@state.mn.us)  
C: 651-775-4216