



SP 2785-424

I-494 Airport to Hwy 169 Project 1

35W Solutions Alliance Board Meeting
September 14, 2023

I-494 Vision

Implementation Plan

Project 1

Elements 3, 4, 5 (partial) and 7

Letting date - April 2023
Construction duration - 2023 to 2026
\$320M construction let budget \$419M
Remaining priority issues - EA, ROW

Project 2

Element 6

Letting date - TBD but no earlier than 2024
Construction duration - TBD
Cost range - \$10M to \$20M
Remaining priority issues - cost estimate, design (to be done by Fall 2023), ROW, RR coordination, funding

Project 3

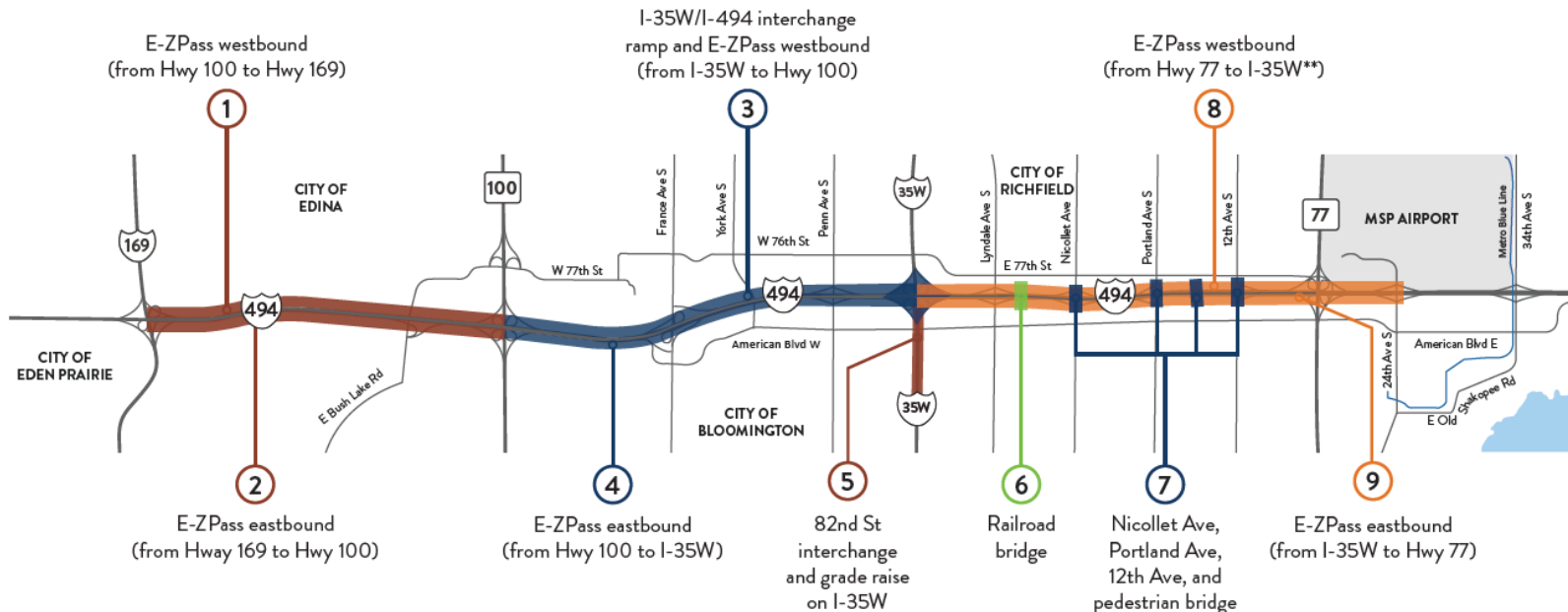
Elements 8 and 9

Letting date - TBD
Construction duration - TBD
Cost range - \$60M to \$100M
Remaining priority issues - project development, cost estimate, funding

Project 4

Elements 1, 2, and 5

Letting date - TBD
Construction duration - TBD
Cost range - \$50M to \$90M
Remaining priority issues - project development, cost estimate, funding

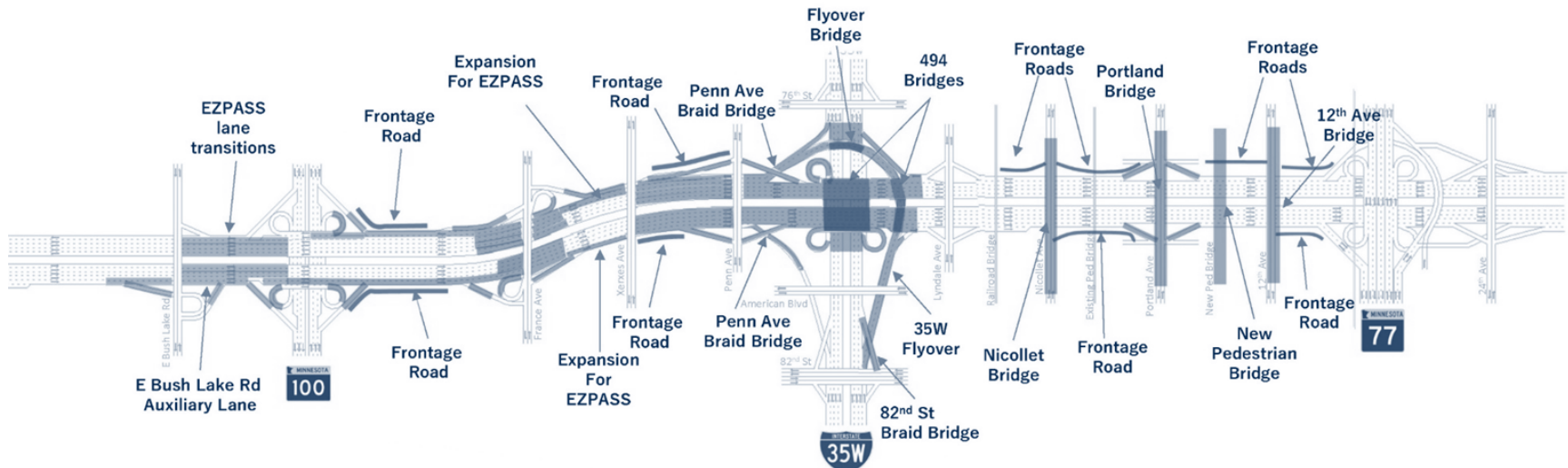


(E-ZPass is formerly known as MnPASS)

**Added capacity begins at 24th Ave with E-ZPass designation just west of TH 77

SP 2785-424 – I494: Airport to Hwy 169 Design-Build Project Scope

- E-ZPass on I-494 in both directions between East Bush Lake Road and I-35W
- Reconstruct I-494/I-35W interchange to turbine design
- Reconfigure access at Nicollet, Portland, and 12th Avenues



Contract Status

- January 18, 2023: Project letting with C.S. McCrossan the apparent best value proposal proposer, cost \$377M
- March 21, 2023: Contract fully executed
- April 24, 2023: Notice to Proceed 1 (temporary work)
- July 17, 2023: NTP2 anticipated by June 30, 2023 (permanent work)
- Substantial Completion September 2026

Preliminary Construction Schedule

- 2023
 - Temporary crossovers and widening, EB I-494 near TH 100, north ramps at I-35W
- 2024
 - WB I-494 near TH 100, EB I-494 from TH 100 to I-35W, Chicago Ave Pedestrian Bridge
- 2025
 - WB I-494 from TH 100 to I-35W, finish I-35W interchange, Portland Ave Interchange
- 2026
 - E-ZPass System, Nicollet Ave & 12th Ave Bridges

High level Maintenance of Traffic Overview

- Maintain 3 lanes each direction on I494 and I35W during peak hour
- Overnight and weekend closures on I494 and I35W. Recent completed the weekend of September 8
 - 24 weekend closures allowed in contract
 - 98 overnight closures allowed in contract
- Ramp closures – many project wide.
- Project Maintenance of Traffic Task Force established

Current/Upcoming 2023 Construction Impacts (Mainline)

- Overnight lane closures project wide on a regular basis through 2026
- Ramp closures and I494 mainline lane shifts near East Bush Lake Rd/TH 100. Permanent concrete paving.
- Ramp closure SB 35W to WB I494
- Ramp closure WB I494 to NB I35W, ramp closure WB Lyndale Ave to NB 35W.
- Potential Winter 2023-2024 Work: Retaining Walls, I-494/I-35W turbine flyover bridge substructures, Chicago Ave Pedestrian Bridge substructures

Current/Upcoming 2023 Construction Impacts (Mainline)

- WB I494 Over I35W temporary bridge widening to accommodate later year Maintenance of Traffic
- Permanent construction of new ramp flyover bridge (NB I35W to WB I494 flyover ramp) to accommodate later year Maintenance of Traffic
 - Traffic impacts on I35W for pier and abutment construction for both bridges

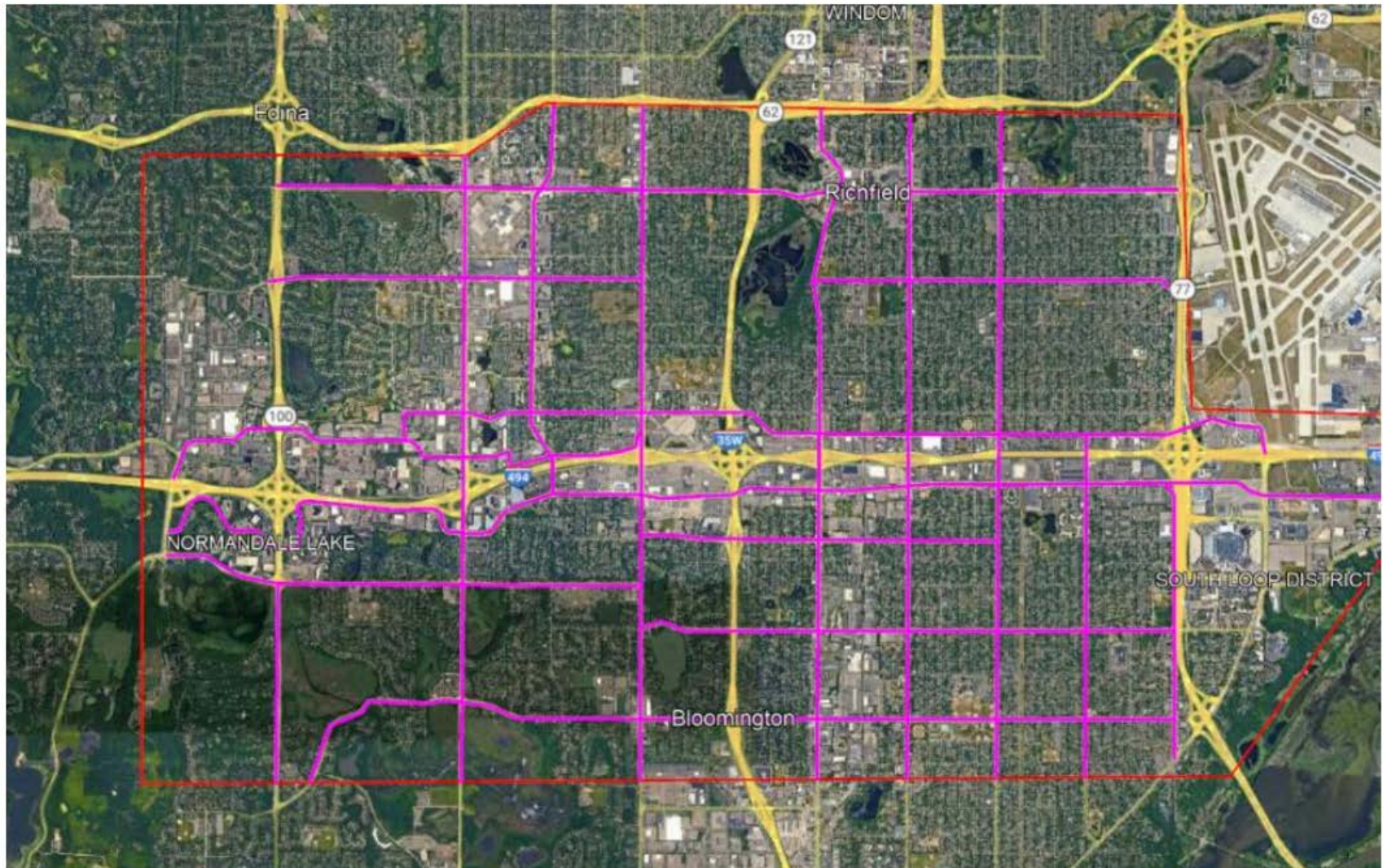
Current/ Upcoming 2023 Construction Impacts (Local)

- Recent closures of Best Buy Park and Ride, Southtown Drive frontage road
- Building removals (5) in the Portland/494 area
- Utility work project wide, large emphasis between TH 100 and France Ave including possible frontage road work on American Blvd and 78th Street.
- Girard Ave reconstruction/realignment and associated closure
- Penn/82nd Street intersection modifications
- Chicago Ave pedestrian bridge work

Performance Based Local TMP Process

- DB Contractor to monitor 26 local intersections adjacent to project for traffic operations (expectation of traffic diversion from mainline).
- Process has tools in place to make modifications at intersections when issues arise (signal timing, physical changes such as installation of temporary signals, temporary turn lanes, traffic calming, etc)
- Signal timing modifications for ramp closures – reviewed by DB Contractor prior to each ramp closure.

Performance Based Local TMP Process



Communications and Maintenance of Traffic

- Consultant Contract to manage communications for the 3 MnDOT projects in the vicinity of the airport.
 - I-494: Airport to Hwy 169 Design-Build Project
 - I-494: MN River Bridge
 - I-35W Pavement Preservation
- Similar coordination to TH 5 Airport project



Public Information

- Public Information Hotline

- info@i494Construction.com
- 651-583-6435

- Visit the project websites

<http://www.dot.state.mn.us/metro/projects/i494-airport-hwy169/> (study)

<http://www.dot.state.mn.us/metro/projects/i494edina-richfield/index.html>
(construction)

Right of Way Acquisition

- 115 total parcels acquired for project
- 10 outstanding as of September 2023
- Last parcel anticipated Title and Possession January 2024.
- Most are small strips of temporary easement. Some are permanent and a few are total takes.

Watchlist items

- Night work and nighttime noise
- Business impacts on frontage roads and local streets
- Workzone safety and speed management throughout project
- Utility coordination – operate on their own schedule and sometimes beyond project limits

Pictures



Temporary paving near I35W/494

Pictures



Subcutting near East Bush Lake Road for mainline WB I494

Pictures



Pipe work near East
Bush Lake Road



Pictures



Drone I494 @ EBLR looking East

Pictures



Pipe Crossing I35W
weekend closure

Pictures



Deep Sewer Excavation Loop WB I494 to SB I35W



Deep Sewer Excavation Loop WB I494 to SB I35W

Temporary Construction



Thank you!

Greg Asche

MnDOT I494 Project Manager

651-775-1168

greg.asche@state.mn.us