

# 20-Year State Highway Investment Plan

---



MINNESOTA **GO**

## 35W Solutions Alliance

May 11, 2023

# What are we planning for? What is MnSHIP?

SEPTEMBER 2022

---

## 20-YEAR STATE HIGHWAY INVESTMENT PLAN



Identifying priorities for investing in state highways to maintain and improve the system over the next 20 years.

MINNESOTA **GO**

# What is MnSHIP?



Directs capital funding on the 11,703 miles of state highways



Budgets for estimated funding over 20 years



Identifies investments by categories but is not project specific



Part of the Minnesota GO Family of Plans



MINNESOTA GO

# Why does MnSHIP matter?

MnSHIP investment direction guides the planning of projects and improvements on the state highway system

## MINNESOTA GO 50-YEAR VISION

Statewide Multimodal  
Transportation Plan



20-Year State  
Highway Investment Plan



**10-YEAR CAPITAL HIGHWAY  
INVESTMENT PLAN (CHIP)**

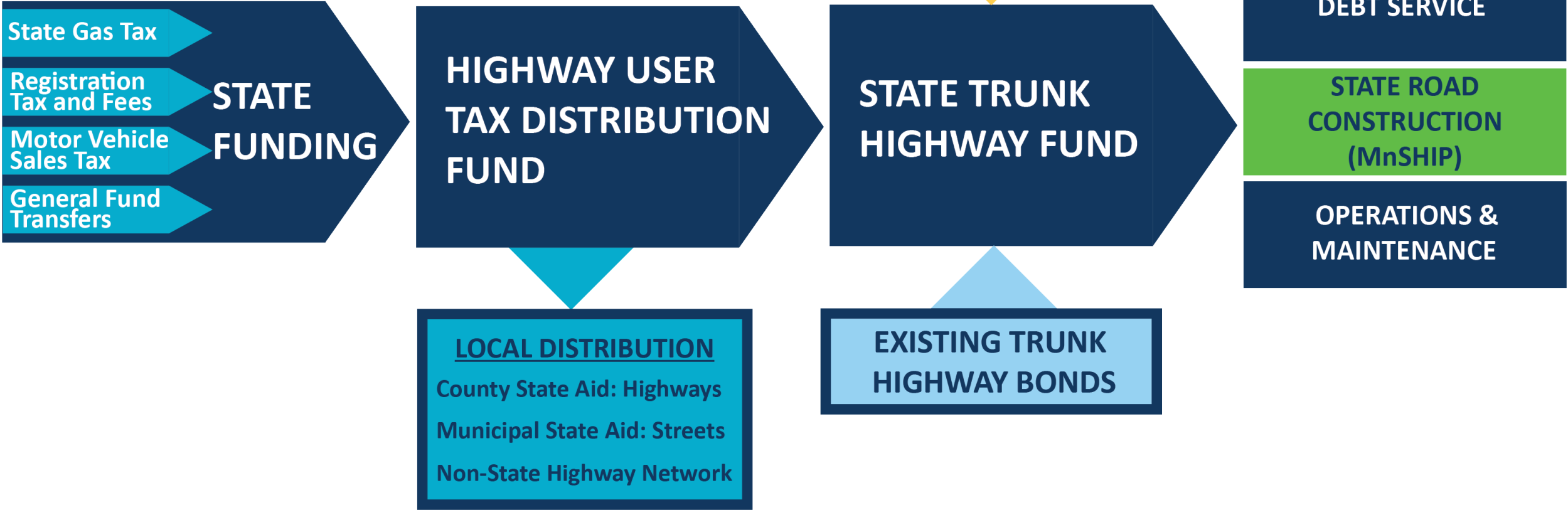
Project planning and development  
Updated annually

**4-YEAR STATE  
TRANSPORTATION  
IMPROVEMENT PROGRAM  
(STIP)**

Project design and its program

CONSTRUCTION

# MnSHIP Revenues





**How much revenue  
is estimated?**

**\$30-33 Billion**  
(2023-2042)

# MnSHIP Investment Categories

## SYSTEM STEWARDSHIP

Pavement Condition  
Bridge Condition  
Roadside Infrastructure  
Rest Areas

## CRITICAL CONNECTIONS

Highway Mobility  
Freight  
Pedestrian and Bicycle

## CLIMATE ACTION

Climate Resilience

## TRANSPORTATION SAFETY

Transportation Safety  
Advancing Technology

## HEALTHY EQUITABLE COMMUNITIES

Local Partnerships  
Main Streets/Urban Pavements

# 1<sup>st</sup> Public Engagement Period

- Ran from mid-July through early October
- Provided an overview on the available funding for the state highway system and context for investment trade-off discussion
- Two main questions
  - What would be your approach to investing in state highways?
    - Preferred approach – Short survey
    - Set a budget – Online highway budget tool
  - What types of improvements are most important?





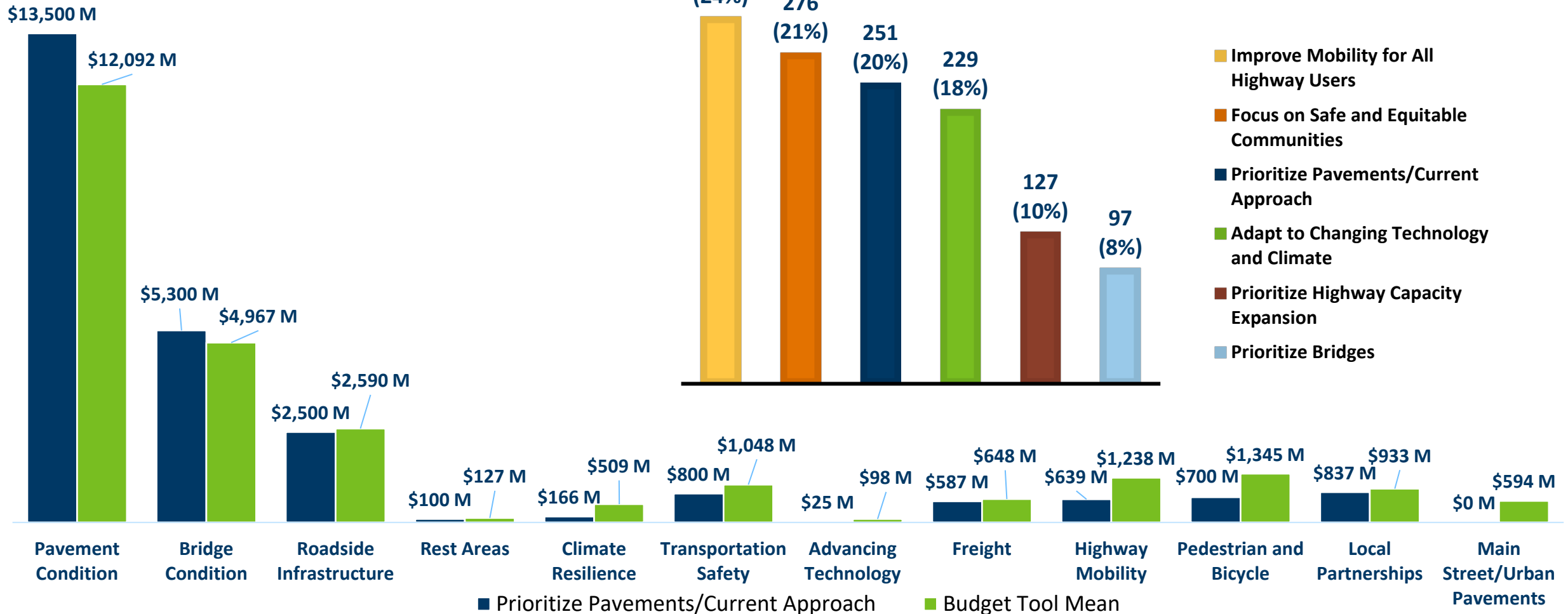
# Public and Stakeholder Engagement

## OVER 2,600 TOTAL RESPONSES!!!

- **Online engagement(1,110 responses)**
  - Highway budget tool ([www.minnesotago.org/investment/](http://www.minnesotago.org/investment/))
  - Spread the word through presentations/briefings, community-based media ad buys and social media posts/boosts
- **Stakeholder engagement (353 responses)**
  - Email updates and presentations/briefings with MPOs, RDOs, ATPs, AMC, MPCA, and others
  - Collected responses through Menti survey during presentations
- **Community engagement (985 responses)**
  - Attended 17 community events (targeting culturally diverse events) and materials at 2 additional county fairs
  - Partnering with 4 community-based organizations in boosting responses and participation
- **Internal engagement (177 responses)**
  - Distributed short survey to internal MnDOT staff to gather feedback and priorities to compare against public and external stakeholder engagement

# Engagement Results

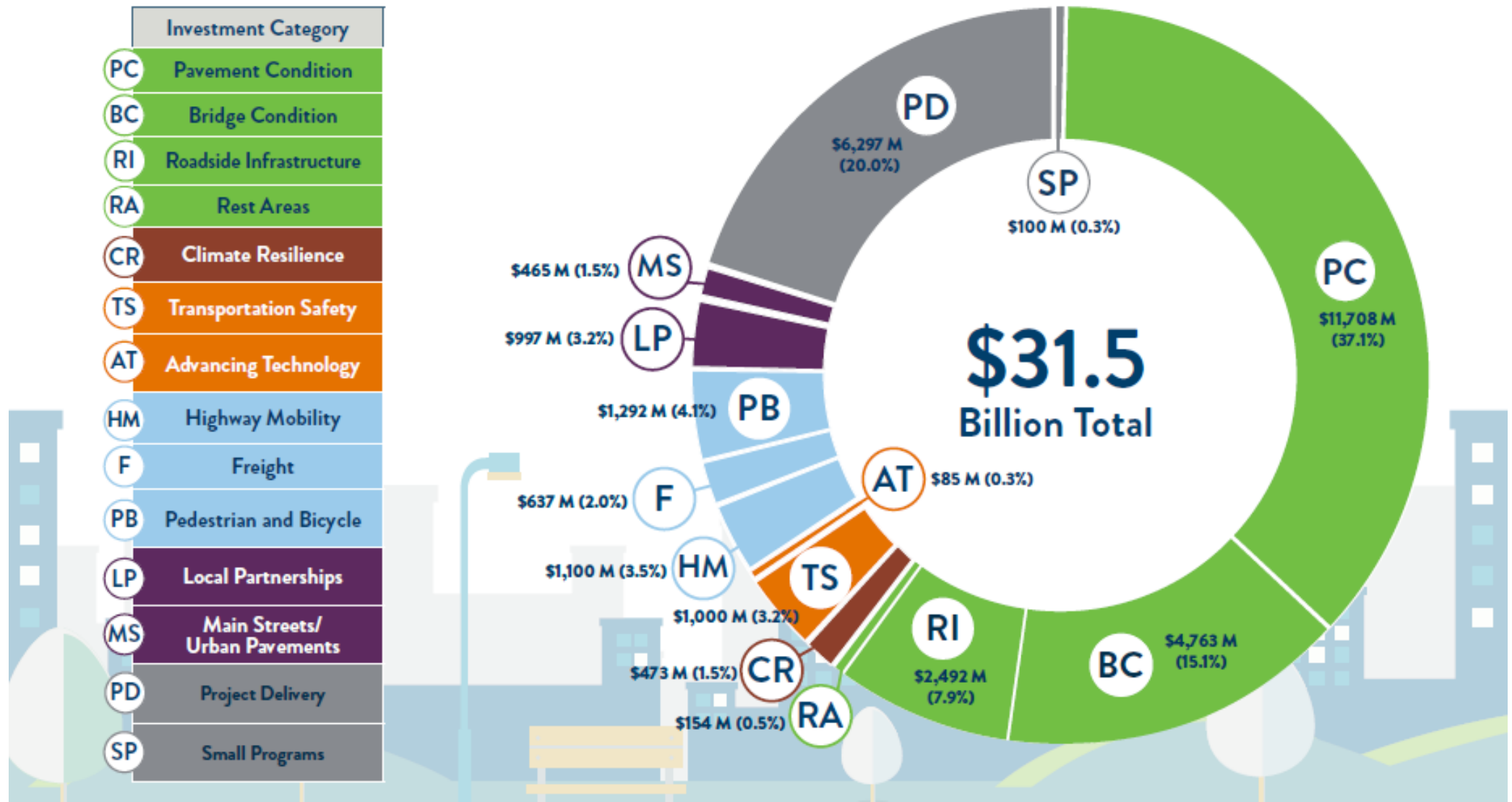
## ONLINE TOOL RESPONSES (1,110)



# Investment Direction Development

- Based on the average of all responses
  - In-person and stakeholder survey
  - Online budget tool
- Analyzed engagement results by demographic groups (gender identity, race/ethnicity) and geographic location
- Internal MnDOT review and approval

# Draft 20-Year Investment Direction - \$31.5 billion



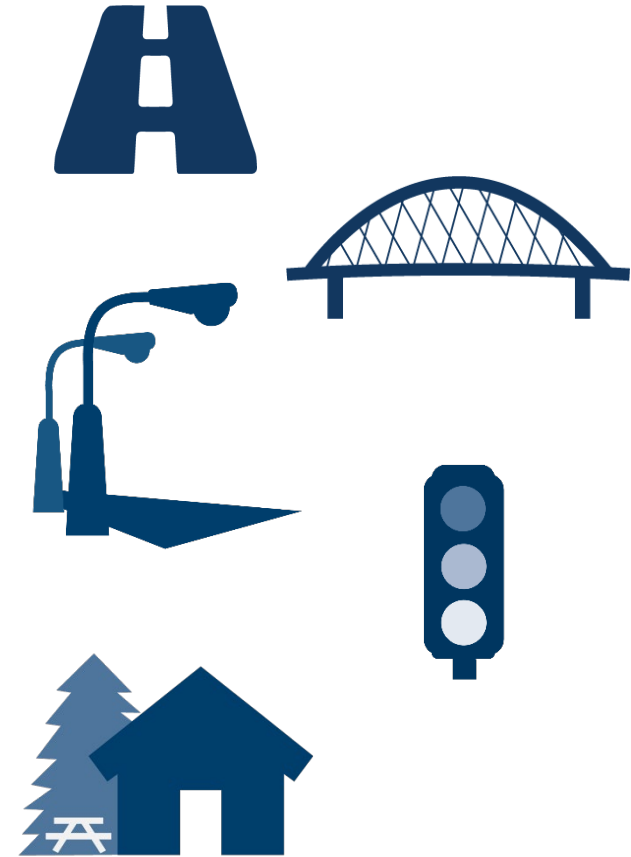
# Draft Investment Direction Themes

- Invest to maintain the existing system
- Improve mobility, accessibility, and safety for all
- Begin to adapt to a changing future
- Focus on communities and livability

# Invest to Maintain Existing System

**~60% of investment towards maintaining the existing system**

- Bridge Condition investment increased to manage bridge needs and risks
  - Meeting targets for bridges on National Highway System and nearly meeting targets on non-NHS
- Pavement and other roadside infrastructure outcomes in line with 2017 plan outcomes



# Improve Mobility, Accessibility, and Safety for All



- Increased funding in ADA compliance by 2037
  - Sidewalks, curb ramps, signals
  - (NEW) Pedestrian bridges, multi-use trails, rest areas
- Address pedestrian and bicyclist network gaps and safety improvements (*new non-motorized safety program*)
- Focus on traffic management, localized mobility/safety, and adding E-Z Pass lanes
- Continue investing in freight mobility, safety, first/last mile improvements
- Invest in bus-only shoulders/ramps and improvements around transit stops on state highways

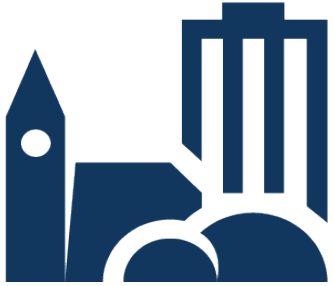
# Begin to Adapt to a Changing Future

- Restart flood mitigation program to address 10-12 locations
- Invest in proactive projects to prevent flooding, erosion, and highway weather-related disruptions
- Add or improve green infrastructure along 150-200 miles of state highways like shade trees, rain gardens, native planting and/or natural stormwater filtration systems
- Continue to invest in expanding the fiber network, new traffic cameras, dynamic message signs, and signal connectivity
- Pilot programs to invest in roadway improvements to integrate with changing vehicle technology





# Focus on Communities and Livability



- Create program to make up to 100 livability improvements such as:
  - Reuse of under bridge areas for community spaces
  - Better lighting and aesthetics
  - 1-3 smaller cap/stitches to improve connections between communities divided by state highways



- Invest in local priorities and local-led projects on state highways through the Local Partnership Program
- Support economic development opportunities through continued funding of the Transportation Economic Development Program
- Provide funding for urban reconstruction projects to provide more opportunities to address local priorities and concerns
- Set aside \$230 million to leverage funding grants and solicitations outside of MnSHIP funding such as federal RAISE grant program



# **Give us your feedback!**

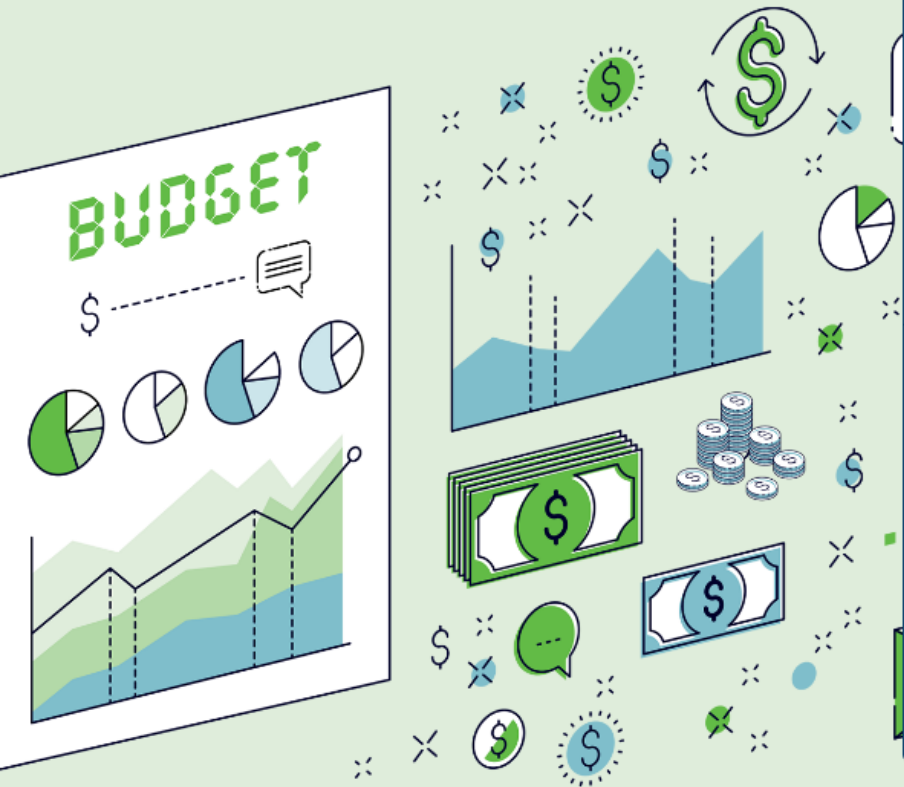
**Go to:**

**[www.minnesotago.org/investment/](http://www.minnesotago.org/investment/)**

# Highway Budget Tool

**m** MINNESOTA STATE HIGHWAY INVESTMENT PLAN

## Minnesota State Highway Investment Plan



### Give us your feedback on Minnesota's state highway system investment

#### What is Minnesota's state highway system?

Click the map to see which roads make up the state highway system.

#### How did we come up with our planned investments?

MnDOT completed the first round of public engagement for the [Minnesota State Highway Investment Plan](#) in Fall of 2022. During the first round of public engagement, Minnesota state highway users provided important feedback on how they want to prioritize spending on the state highway system over the next 20 years. MnDOT used that information to develop a draft state highway investment direction. We need your help to finalize the state highway investment direction and tell us how you would spend additional dollars!



### Tell us about yourself!

Our goal is to get input from a wide range of people. We are collecting demographic information to identify who we're hearing from. Providing data is optional, however, by answering you will be helping MnDOT understand the needs and preferences of the diverse communities that MnDOT serves. Your responses will not be associated with you, personally.

Age

Are you of Hispanic descent?

What describes your racial/ethnic background?

What best describes how you think of yourself?

# Feedback on the draft investment direction

## Draft investment direction

Explore the pie chart below to see how we plan to spend our anticipated \$31.5 billion budget on the state highway system over the next 20 years. [Learn more about each investment category.](#)

### System Stewardship

- Pavement Condition
- Bridge Condition
- Roadside Infrastructure
- Rest Areas

### Climate Action

- Climate Resilience

### Transportation Safety

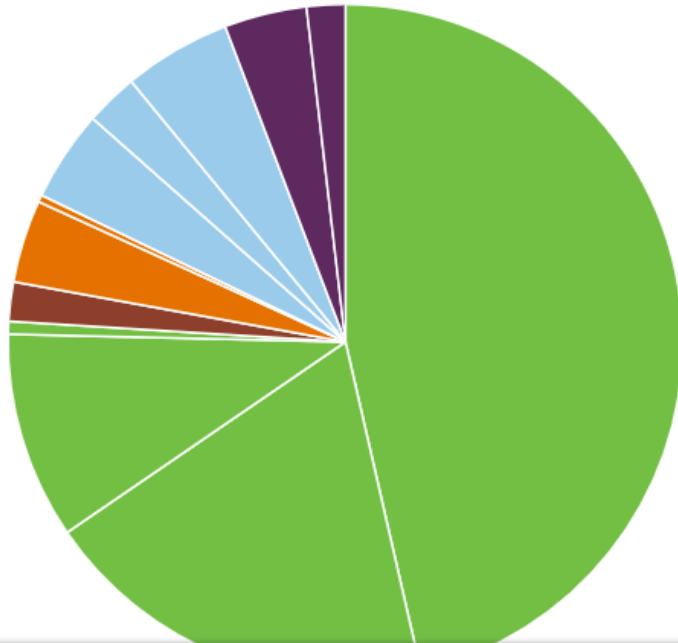
- Transportation Safety
- Advancing Technology

### Critical Connections

- Highway Mobility
- Freight
- Pedestrian and Bicycle

### Healthy Equitable Communities

- Local Partnerships
- Main Street/Urban Pavements



## SHARE YOUR INPUT:

## Tell us what you think about the draft investment direction

### How do you feel about the draft investment direction?

- ☐ I love it
- ☐ I like it
- ☐ I am lukewarm to it
- ☐ I don't like it
- ☐ I hate it

### Why do you feel this way? What would you adjust?


### Anything else you want us to know?

Submit

# Tell us your priorities for additional revenue

## Increased Revenue Scenario Budget Tool

Pick and choose spending levels for different categories below. You can spend up to \$5.5-6.5 billion. This total is MnDOT's increased revenue scenario.



### Advancing Technology

[Learn more](#)

MINIMUM

✓

\$85M

\$112M

\$176M

MAXIMUM

ITS expansion 


Level 1

Connected and automated vehicles (CAV) readiness 

Level 1

Fiber network 

Level 1



### Bridge Condition

[Learn more](#)

MINIMUM

✓

\$4.8B

\$5.2B

\$5.5B

MAXIMUM

On major highways 

Level 1

All other roadways 

Level 1

Bridge culverts



### Climate Resilience

[Learn more](#)

MINIMUM

✓

\$473M

\$605M

\$848M

MAXIMUM

Flood mitigation 

Level 1

Proactive resilient infrastructure 

Level 1

Snow fences 

Level 1

Green Infrastructure 

Level 1.5

AVAILABLE BUDGET  
\$5.5 - 6.5B

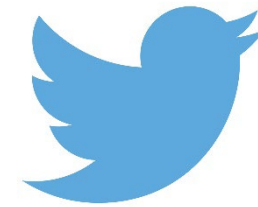
Available Budget

\$0B  
ADDITIONAL  
INVESTMENT

\$0.0B

# Help us spread the word!

- Share the link to the online investment budgeting tool  
[www.minnesotago.org/investment/](http://www.minnesotago.org/investment/)
- Follow MnDOT on social media and share MnSHIP posts
- Sign up for e-mail updates
- Request a presentation for your organization



# Timeline

- **Now to May 22nd**– 2nd public engagement period
- **Summer 2023** – Compile draft plan and seek public comment
- **Fall/Winter 2023** – Adopt final plan

# Questions?



# Thank you again!

Brad Utecht

Investment Planning Director

*Bradley.Utecht@state.mn.us*

651-366-4835

MINNESOTA The logo consists of the word "MINNESOTA" in a dark blue, sans-serif font, followed by the word "GO" in a larger, bold, dark blue font. The "O" in "GO" is replaced by a green circle with a dark blue outline.