



MnDOT South Area Update

I35W Solutions Alliance
October 14, 2021

Topics

- I35/CSAH 50 interchange and corridor assessment
- I35W Minnesota River Bridge Celebration
- TH 77 Congestion Mitigation Study
- Highway 13 Environmental Assessment and Dakota Ave Interchange

I35W Minnesota River Bridge Celebration



TH 77 Congestion Mitigation Study

- Why this study?
 - Recurring congestion, elevated crash history, and reliability issues
 - Continued stakeholder interest
 - Continued interest as potential E-ZPass corridor
- Why now?
 - MnDOT upcoming pavement project planned for 2026
 - Better traffic data available
- What is included?
 - Large scale improvements
 - Small scale improvements



TH 77 Congestion Mitigation Study

- Evaluation of three options against criteria outlined in draft Purpose and Need
 - Fill the gaps: adds a third lane where there are only two
 - Add a lane: adds a fourth regular lane to the entire corridor
 - Add an E-Zpass lane: adds an E-Zpass lane to the entire corridor (3 general + 1 E-Zpass)
- Spot mobility improvements considered as standalone or as necessary sub-components of the three options
- Schedule:
 - Evaluation and further refinement underway
 - Outreach second round complete with third round likely in winter
 - Study complete in spring

Highway 13 Environmental Assessment and Dakota Ave Improvements

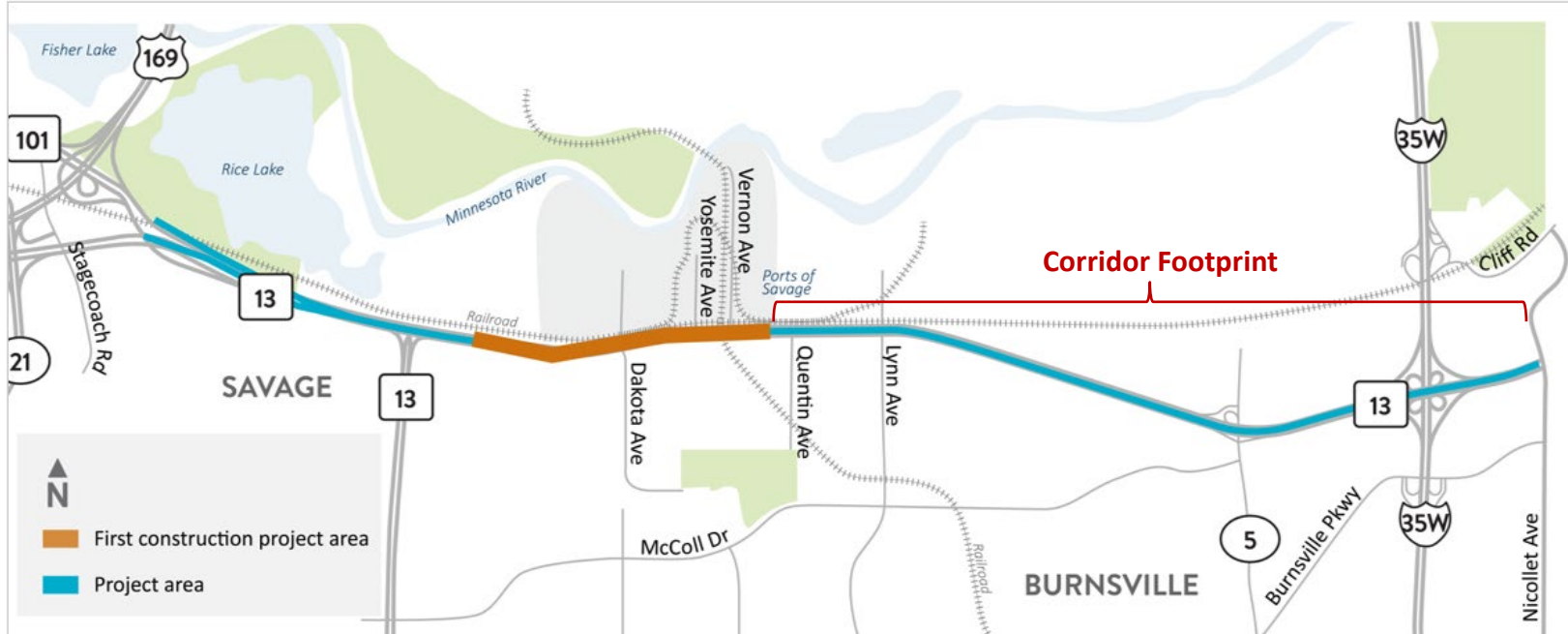
- Project overview
- Construction staging
- Traffic management plan
- Business Liaison introduction
- Next steps/schedule

Highway 13 Project Overview

Project overview

Project goals

- Better understand the needs and opportunities of the corridor
- Reach consensus on a long-term vision for improvements
- Improve freight access at the intersections of Dakota and Yosemite

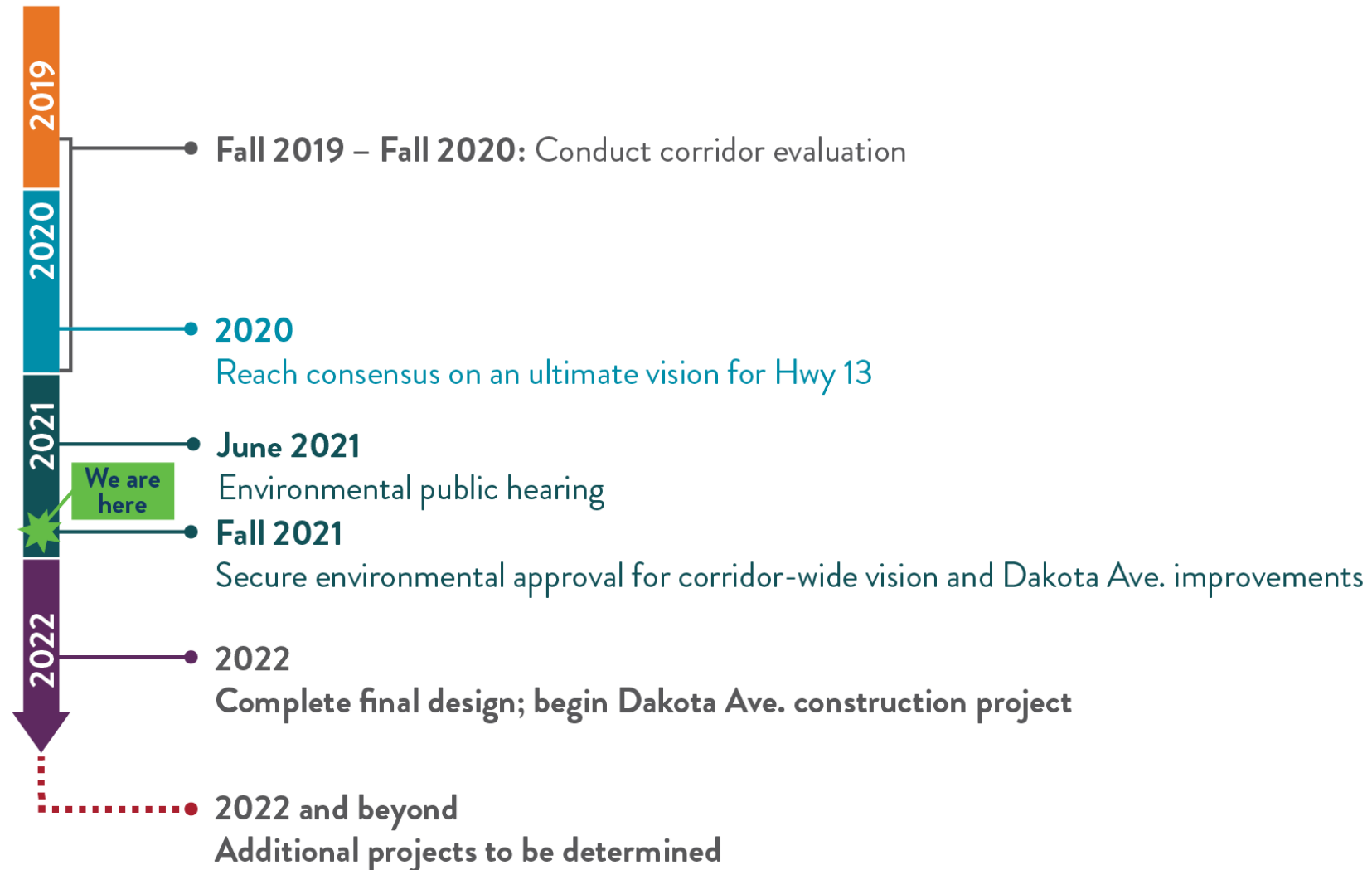


Corridor needs

- Hwy 13 exceeds its traffic capacity resulting in congestion delays
- Several intersections along Hwy 13 have higher than average vehicle crashes
- Hwy 13 is not efficient or safe for trucks
- Pedestrians and bicyclists cannot move freely and safely in the corridor



Timeline



Corridor Footprint recommendations

- **At-grade:** High-capacity at-grade intersections, access closures and supporting roadway improvements
- **Hybrid:** Mix of high-capacity at-grade intersections and grade separation elements, access closures and supporting roadway improvements
- **Freeway:** Grade-separated interchanges, access closures and supporting roadway improvements



At-Grade Example



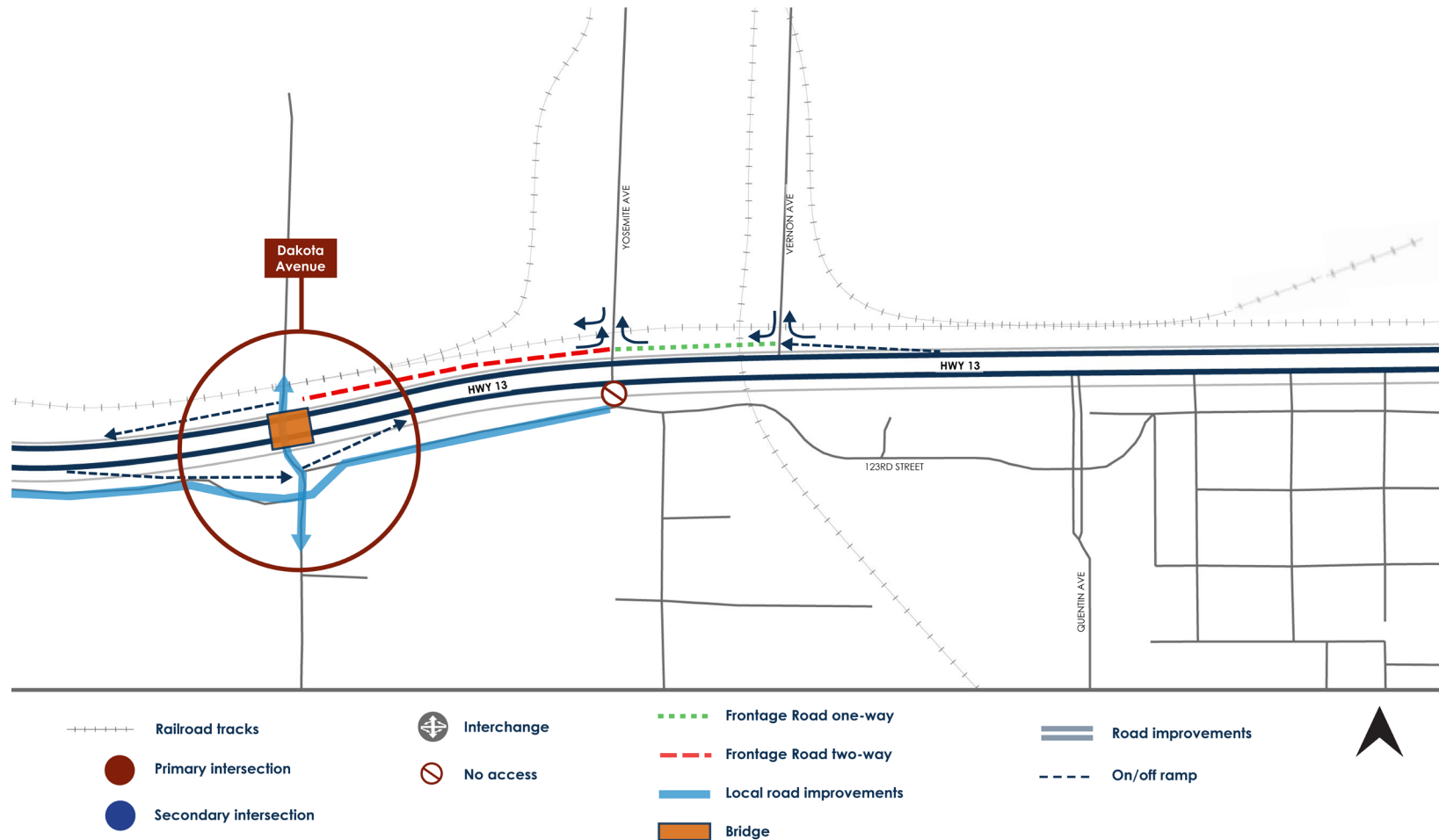
Hybrid Example



Freeway Example

First Construction Project

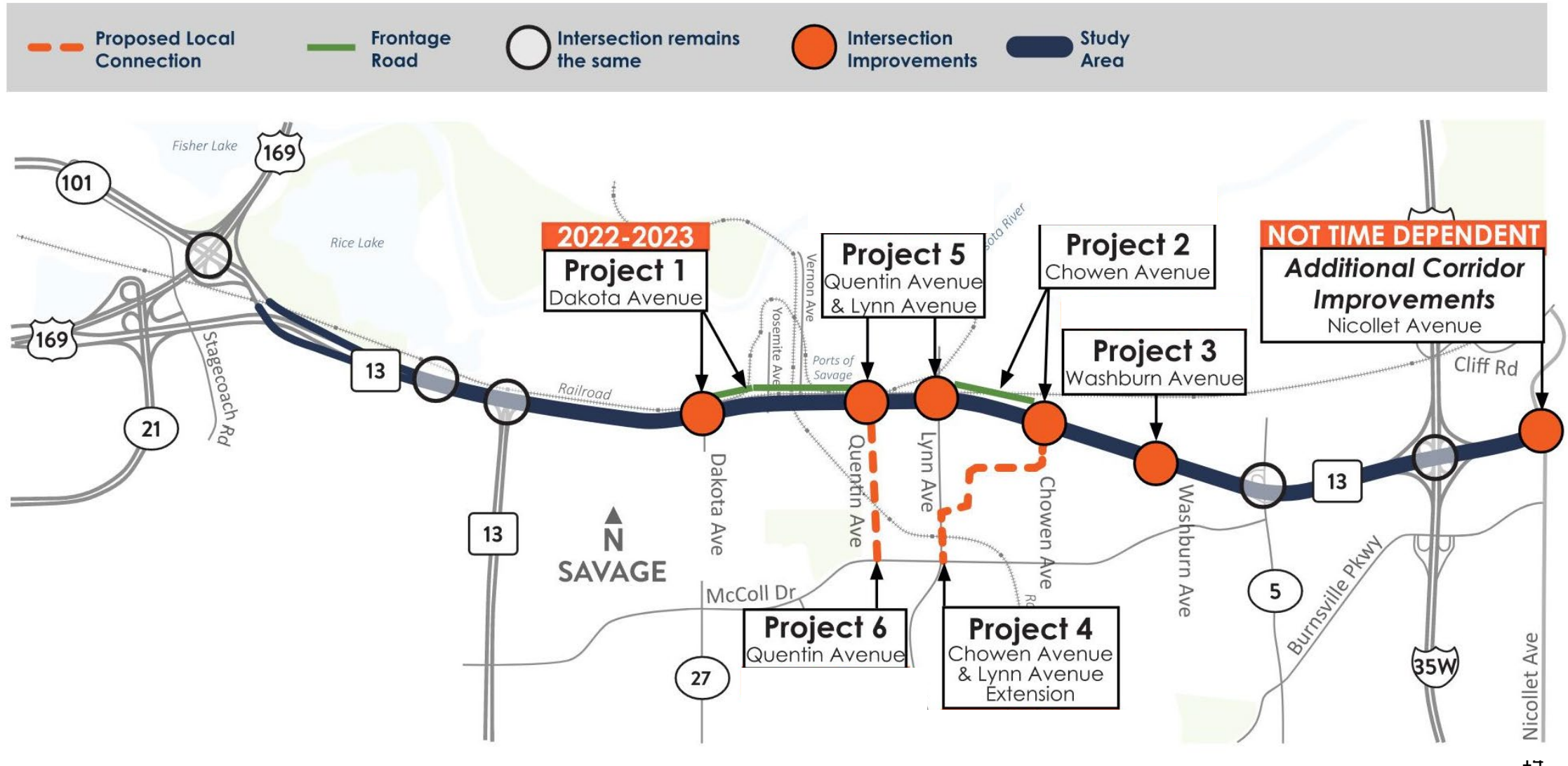
Dakota Avenue Tight Diamond Interchange



Recommended access scenario



Corridor implementation plan



Environmental Assessment update

Environmental Assessment is complete. FONSI signed on October 1, 2021

Environmental Assessment included review of social, economic and environmental factors



Vegetation & Wildlife

- Vegetation
- Fish & wildlife
- Rare, threatened & endangered species



Water Resources

- Floodplains
- Wetlands & fens
- Streams



Community Impacts

- Land use & Parkland
- Bike & pedestrian
- Cultural resources
- Environmental justice



Construction Impacts

- Noise
- Access
- Detours

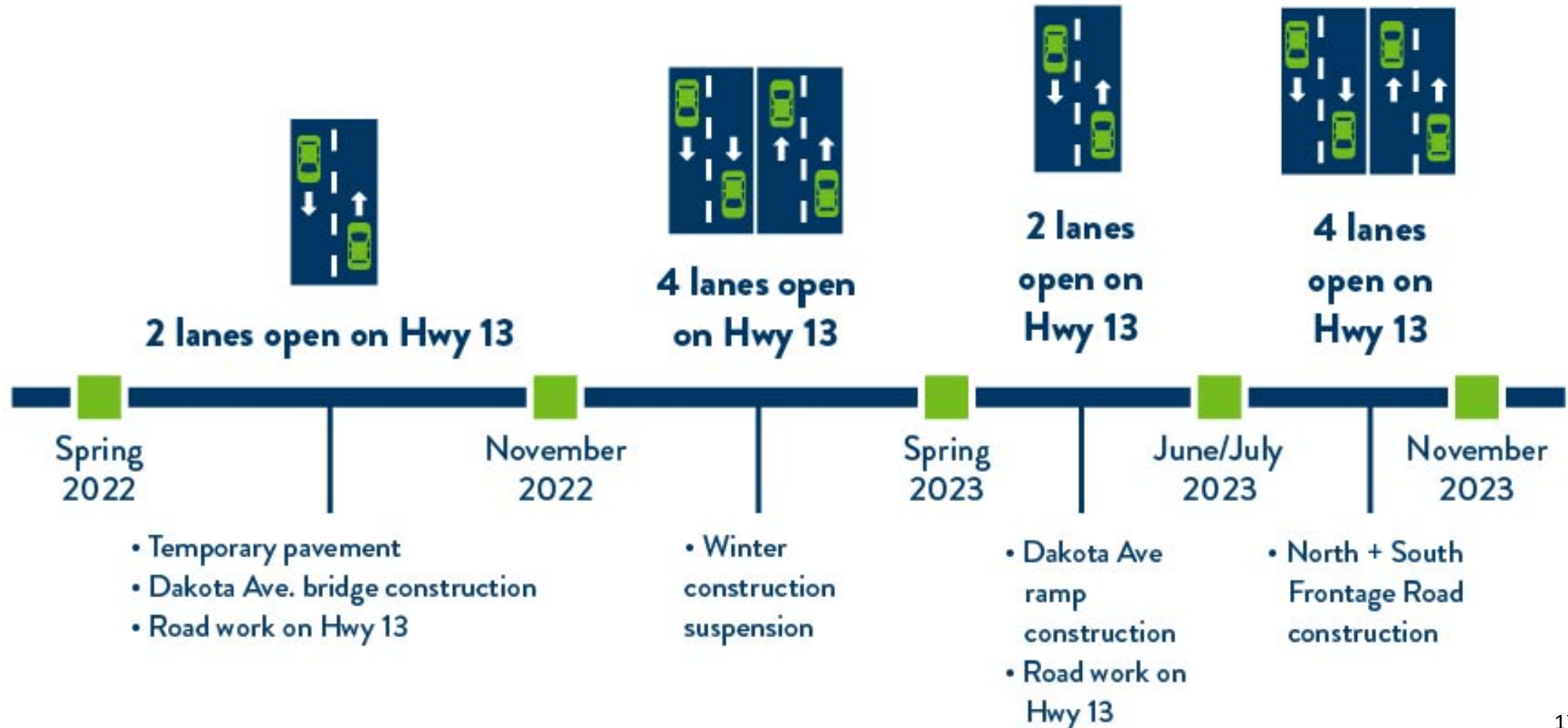


Other Areas of Potential Concern

- Contaminated properties
- Air quality
- Right of way & Economic impacts

Dakota Ave Improvements Construction Staging

Construction staging overview



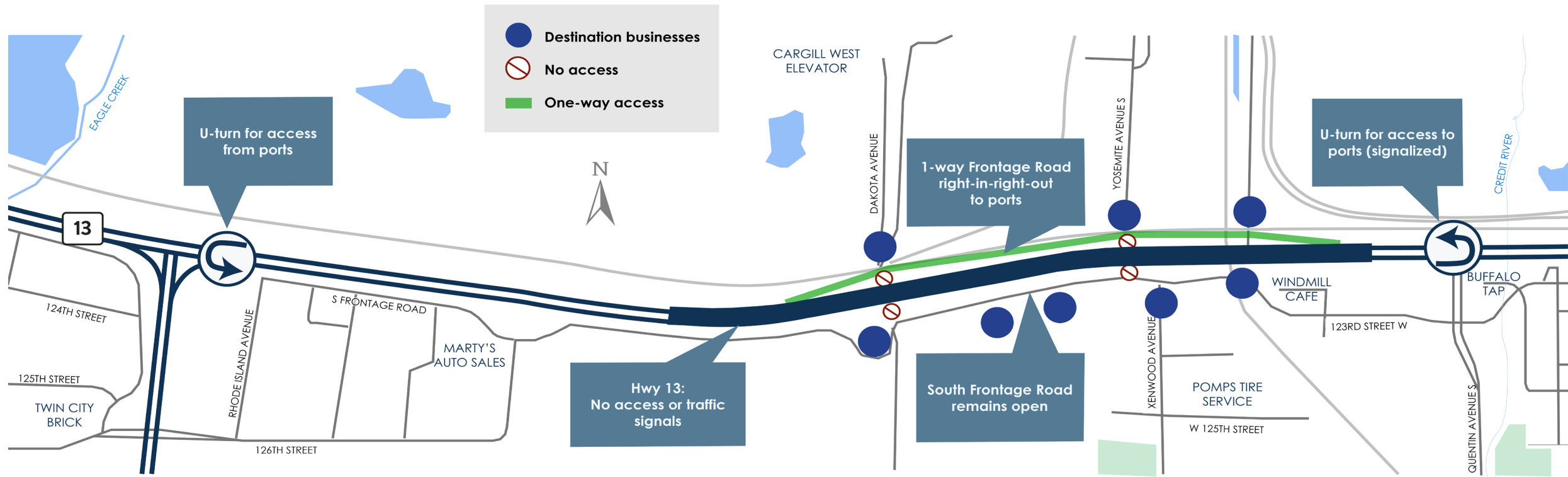
2022-2023 South Metro Area Projects

- I-494 – from Hwy 169 to Hwy 77
 - Interchange access changes and construction of MnPASS lanes
- I-35W – from Minnesota River Bridge to 82nd St
 - Bridge and pavement resurfacing
- County Road 42 - from the west Dakota County line to County Road 11 in Burnsville
 - Pavement resurfacing

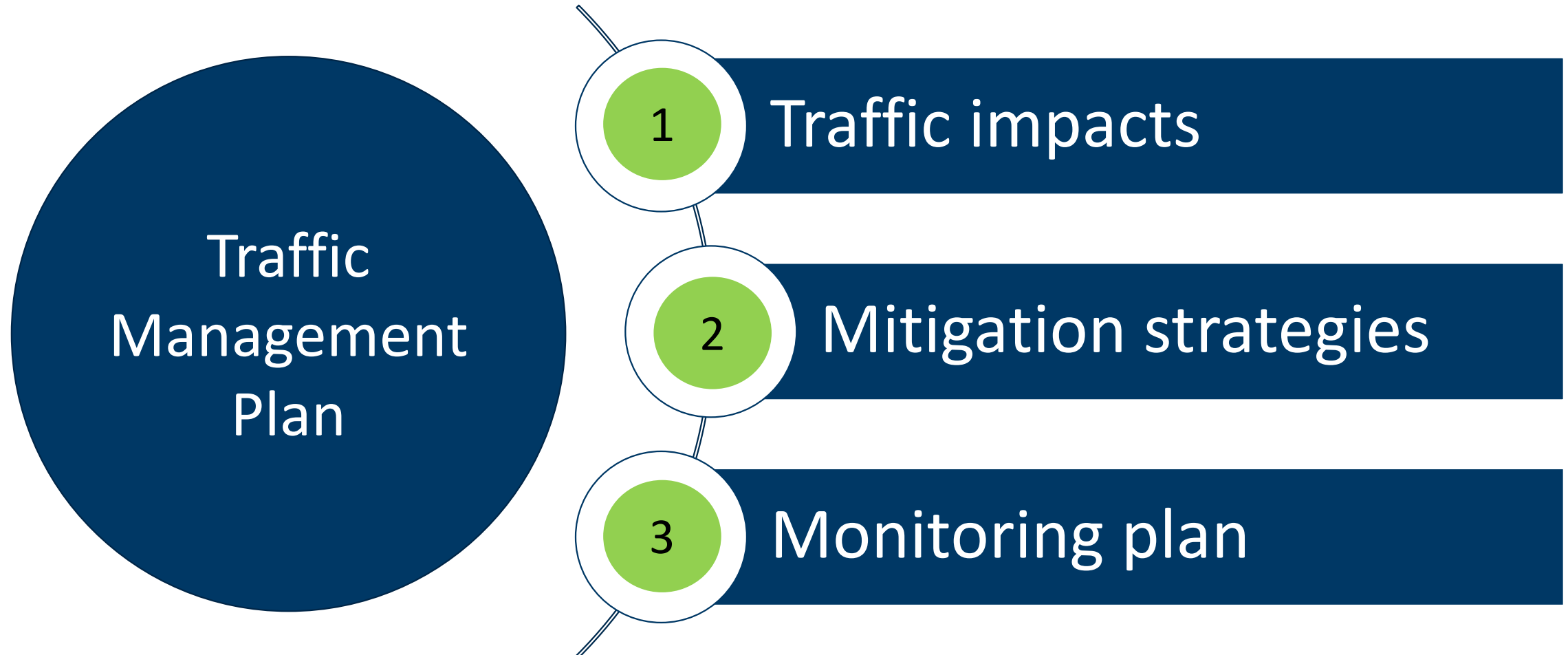
Dakota Ave Improvements Traffic Management Plan

Hwy 13 Construction traffic staging overview

Two-lane "Pipeline"

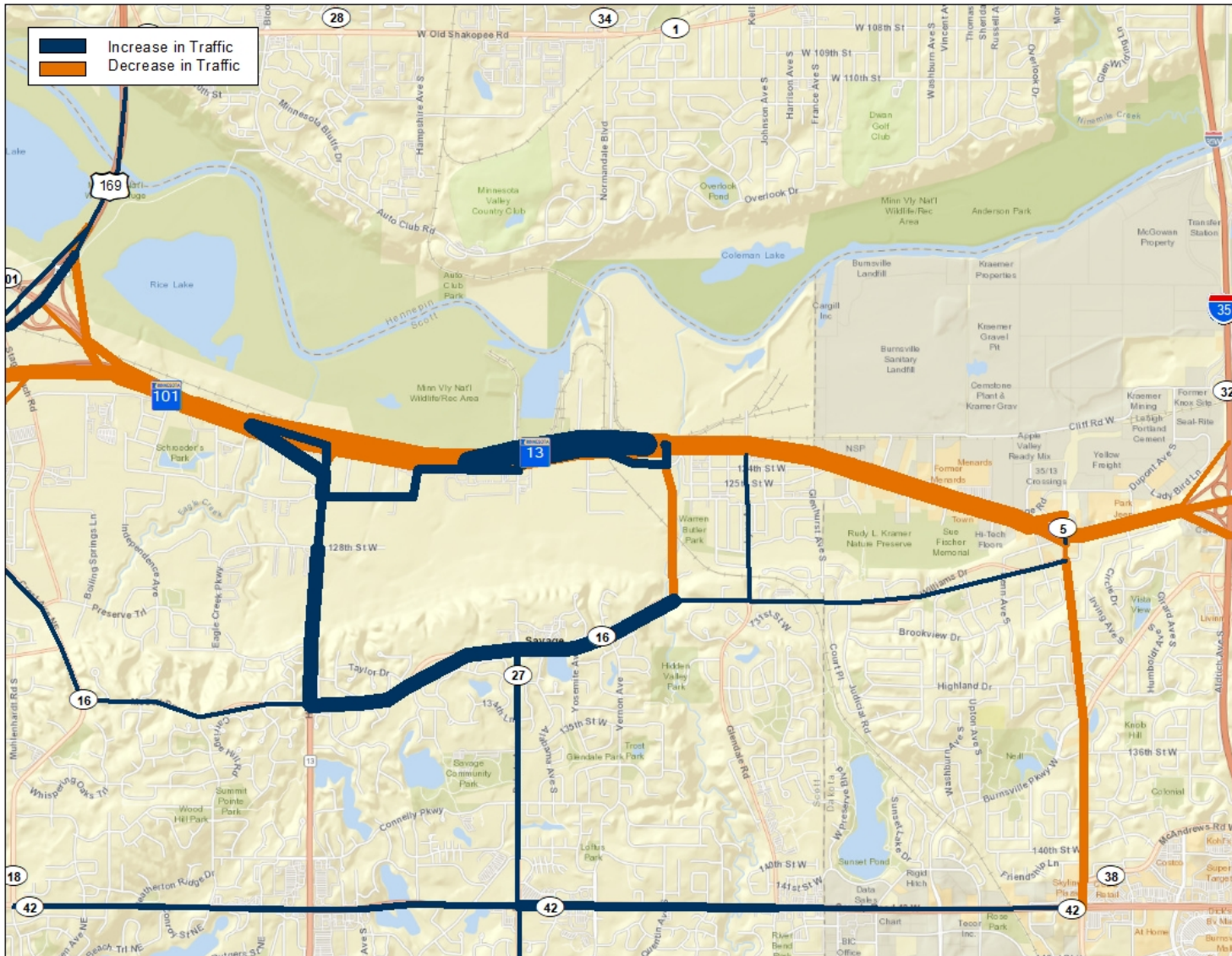


Elements of Traffic Management Plan



1

Understand traffic impacts



- Moderate diversion
 - Hwy 13 South
 - South frontage road
 - McColl Dr.
 - Co. Rd. 42
 - Co. Rd. 18
 - Co. Rd. 21

Traffic flow strategies:

- Advance notification signage
- Existing signal timing/coordination (as needed)
- Access and parking restriction on 126th St./Louisiana Ave. and south frontage road

- Spot locations
 - Hwy 101 eastbound
 - Hwy 13 at McColl Dr.
- Continuous monitoring throughout construction for operational issues
 - If operational issues arise such as extensive queue lengths and local access, MnDOT and the business liaison will work with the City and County to implement changes to mitigate these impacts

Business Liaison introduction



Tony Rotchadl, Bolton & Menk
Hwy 13 Business Liaison
507-995-3288
info@13andDakota.com

- Your contact for questions and concerns during construction
- Will have direct access to the contractor during construction to:
 - Share real-time construction updates
 - Provide business feedback to contractor
 - Resolve issues

How to stay updated

Next steps

- End of October 2021: Final design plan
- Spring 2022: Dakota Ave. construction begins

Stay updated



Visit the project website and submit feedback:
mndot.gov/metro/projects/hwy13savageburnsville



Sign up for email updates on the project



Request a virtual presentation for your
business, organization or community



Email or call project staff:
Michael Corbett, MnDOT
State Program Administrator Coordinator
Michael.J.Corbett@state.mn.us
651-234-7793

Thank you!

Ryan Wilson | MnDOT

South Area Manager – Dakota, Scott, Carver Counties

Ryan.Wilson@state.mn.us