



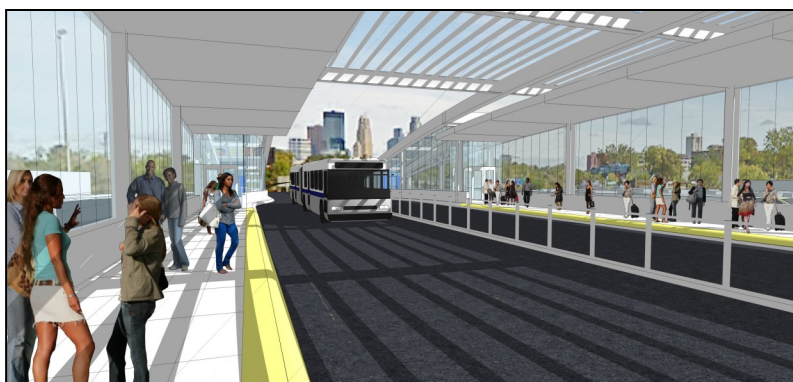
## Design Concept Recommendations

Over the past two years, the I-35W Transit/Access Project Advisory Committee (PAC), along with public agency staff and a consultant design team, has been working to develop recommendations for the I-35W Transit/Access project. Recommendations that are being presented at the November 2012 public open house include a design concept for the proposed transit station, a pedestrian/bicycle connection between Lake Street and the Midtown Greenway, a design concept for Lake Street, and two new ramps to/from I-35W.

### Lake Street Transit Station

A two-level transit station at Lake Street will provide for transfers between north-south transit service on I-35W and east-west transit service on Lake Street. Design principles for the Lake Street transit station are:

- Connects to all travel modes
- Safe and secure
- Comfortable for waiting passengers
- Attractive
- Reflects and connects the community
- Pedestrian-scale
- Positive impacts on existing neighborhoods
- Provides for future ridership growth
- Cost-effective and timely



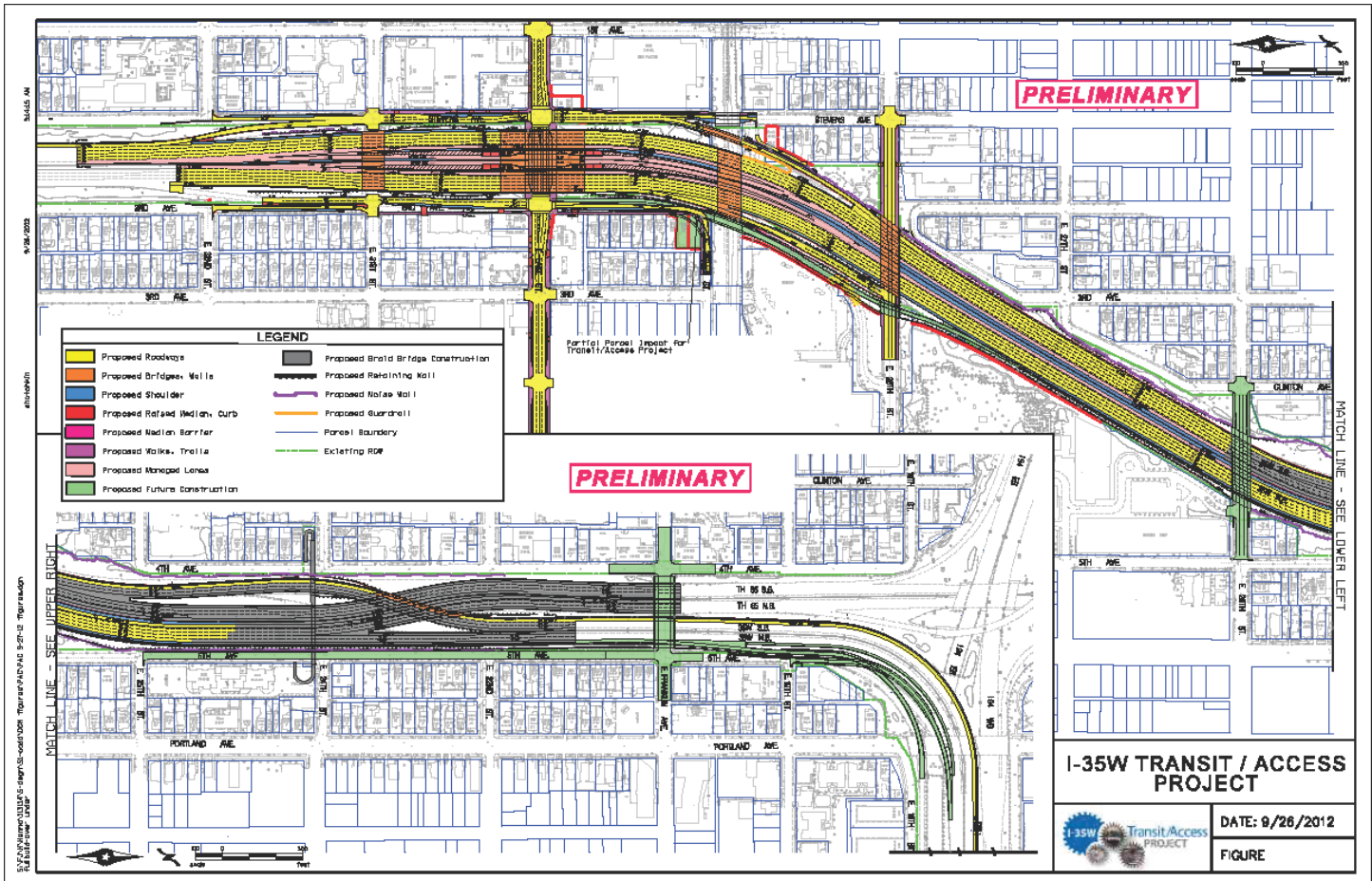
*View of transit station at I-35W freeway level*



*View of transit station on Lake Street looking east from Stevens Avenue.*

## New I-35W Ramps

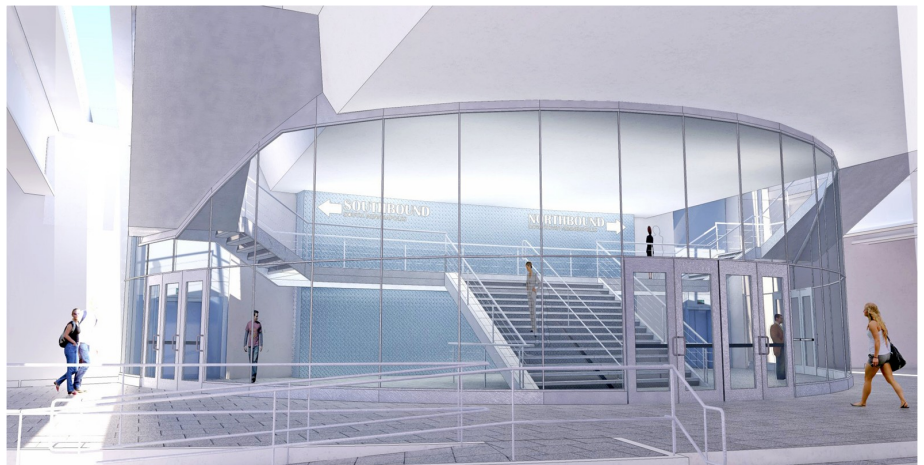
Both the Minneapolis City Council and the Hennepin County Board have recommended that a new southbound exit ramp from I-35W to Lake Street and a new northbound exit ramp from I-35W to 28th Street be included in the I-35W Transit/Access project. A future northbound entrance ramp from Lake Street to I-35W is proposed as a future project, but is not included in the current I-35W Transit/Access project.



## Lake Street Improvements

Recommendations for improvements to Lake Street under a new I-35W bridge include:

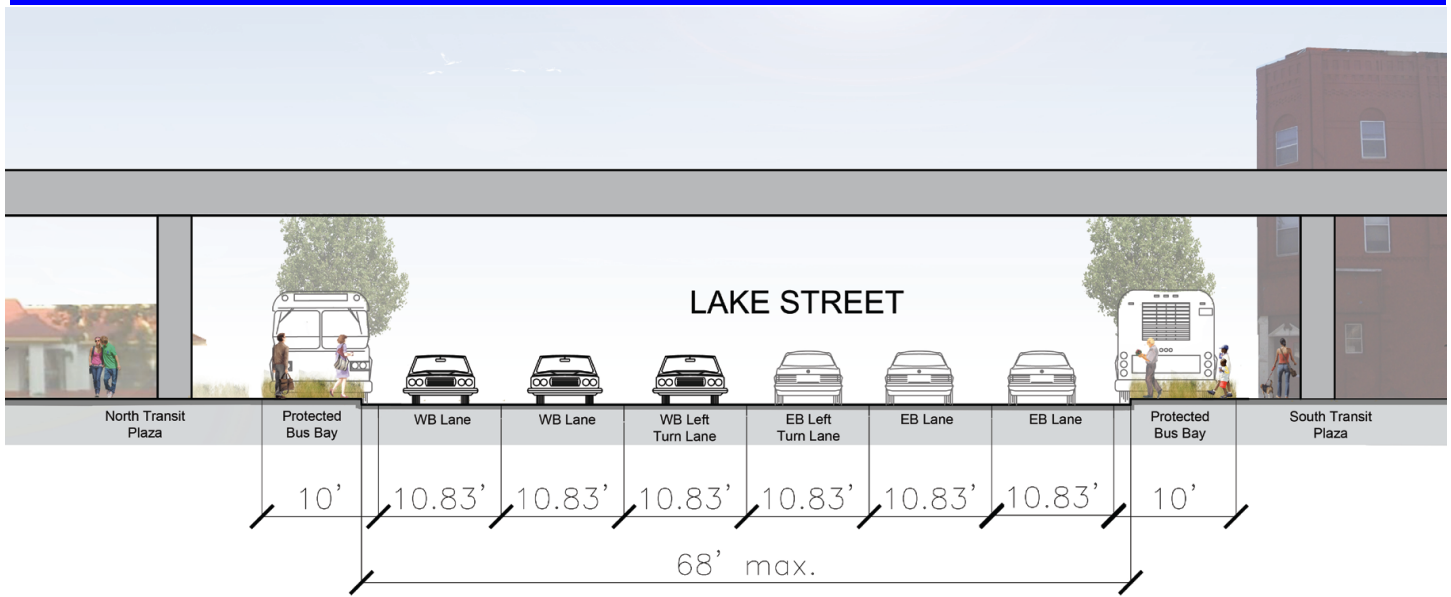
- Wider sidewalks and shorter crossings at the intersections
- Curb extensions (bump-outs) on Lake Street at the 2nd Avenue and Stevens Avenue intersections
- Large pedestrian plaza areas under the bridge with pedestrian-scale lighting, public art and other amenities
- Bus pull-out bays under the bridge
- Two traffic lanes and one left-turn lane in each direction on Lake Street



*Entrance to transit station from Lake Street plaza under I-35W bridge*



## Lake Street Improvements (continued)



View of Lake Street looking east under I-35W bridge from Stevens Avenue

## "Green Crescent" Connection to Midtown Greenway

An improved connection for pedestrians and bicyclists between the new Lake Street transit station and the Midtown Greenway will be provided via a high quality "Green Crescent" path. The Green Crescent will be located just west of the transit station, at the Lake Street level, adjacent to Stevens Avenue. The Green Crescent will have separate paths for bicyclists and pedestrians, a connection from the Greenway to Stevens Avenue and to Lake Street, landscaping, pedestrian-scale lighting, public art, bicycle parking near the transit station, and other amenities.

View of the "Green Crescent" looking toward Lake Street

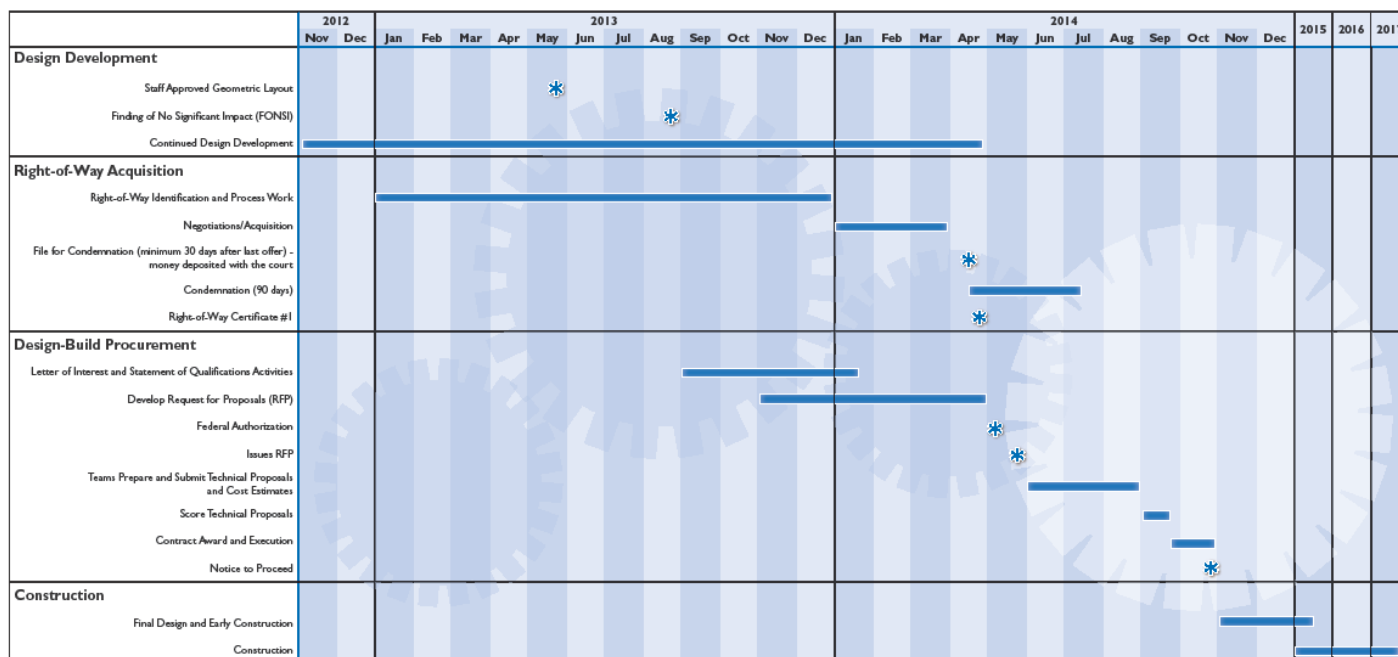


Map depicting the Lake Street plaza level of the transit station, including the "Green Crescent" connection to/from the Greenway





## Timeline for Project Completion



October 3, 2012



## How Can I Participate in the I-35W Transit/Access Project?

Everyone is encouraged to participate in the I-35W Transit/Access project. You can participate by:

- Talking with your PAC representative or attending a PAC meeting (4th Thursday, 8:30-10:30 a.m., check website for PAC list and meeting location)
- Attending public meetings and open houses
- Sending comments to: [james.grube@co.hennepin.mn.us](mailto:james.grube@co.hennepin.mn.us)
- Checking the project website: [www.35lake.com](http://www.35lake.com)
- Signing up to receive e-newsletters: [information@www.35lake.com](mailto:information@www.35lake.com)

## About the I-35W Transit/Access Project

The I-35W Transit/Access Project was initiated in late 2010 by Hennepin County, along with the City of Minneapolis, Metropolitan Council/Metro Transit, and the Minnesota Department of Transportation (MnDOT). The study includes the location and design of a transit station, quality connections for all transportation modes between Lake Street and the transit station, a high quality pedestrian/bicycle connection between Lake Street and the Midtown Greenway, and preliminary engineering for I-35W between approximately 31st Street and I-94 including a new interchange at Lake Street and reconstruction of several bridges between Lake Street and I-94. The study is being carried out in full consultation with residents and businesses in affected neighborhoods and commercial areas through a Project Advisory Committee (PAC), public open houses, and meetings with neighborhood and business associations.

### For more information about the I-35W Transit/Access Project

James Grube, Director of Transportation, Hennepin County

612-596-0307 [james.grube@co.hennepin.mn.us](mailto:james.grube@co.hennepin.mn.us)