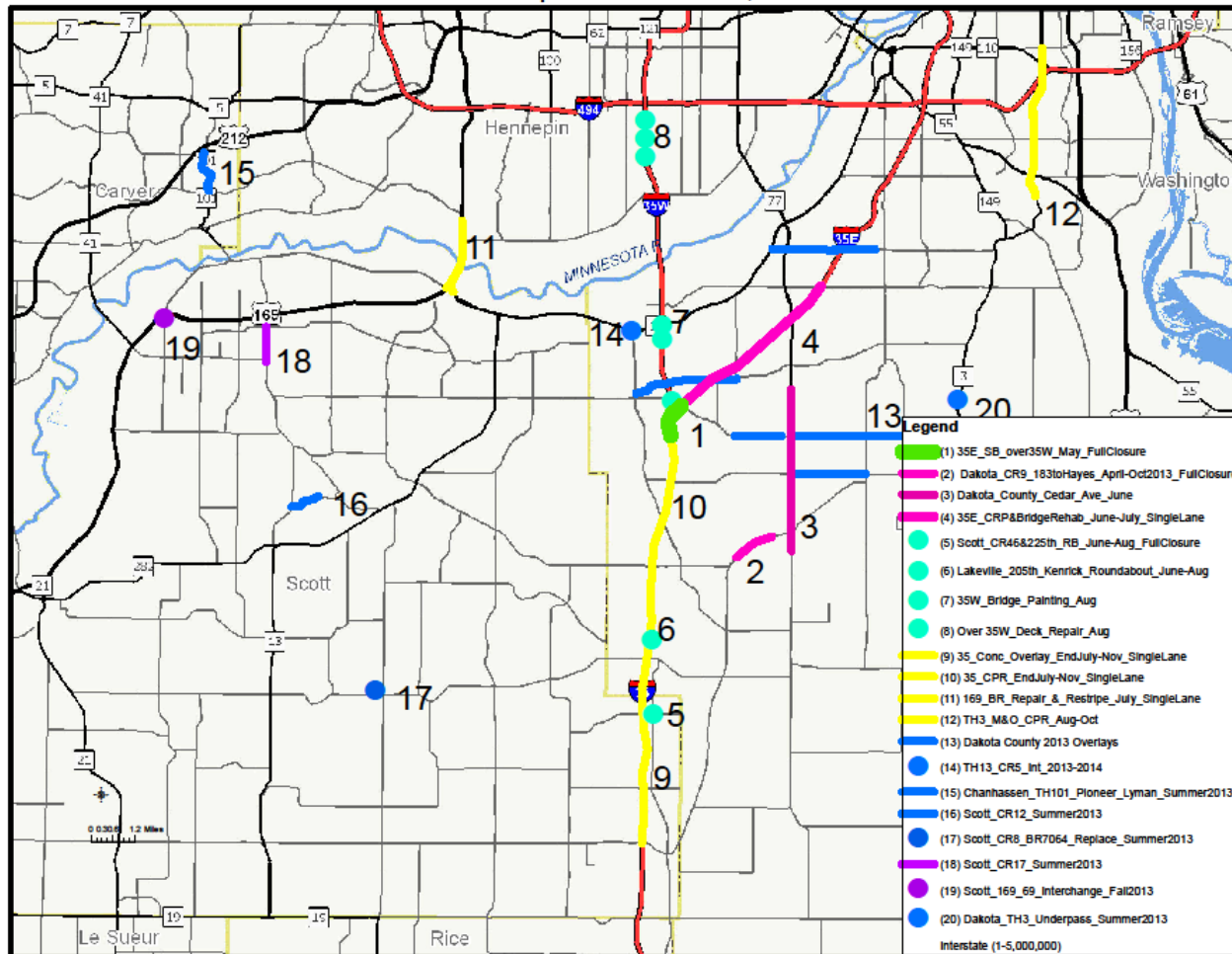


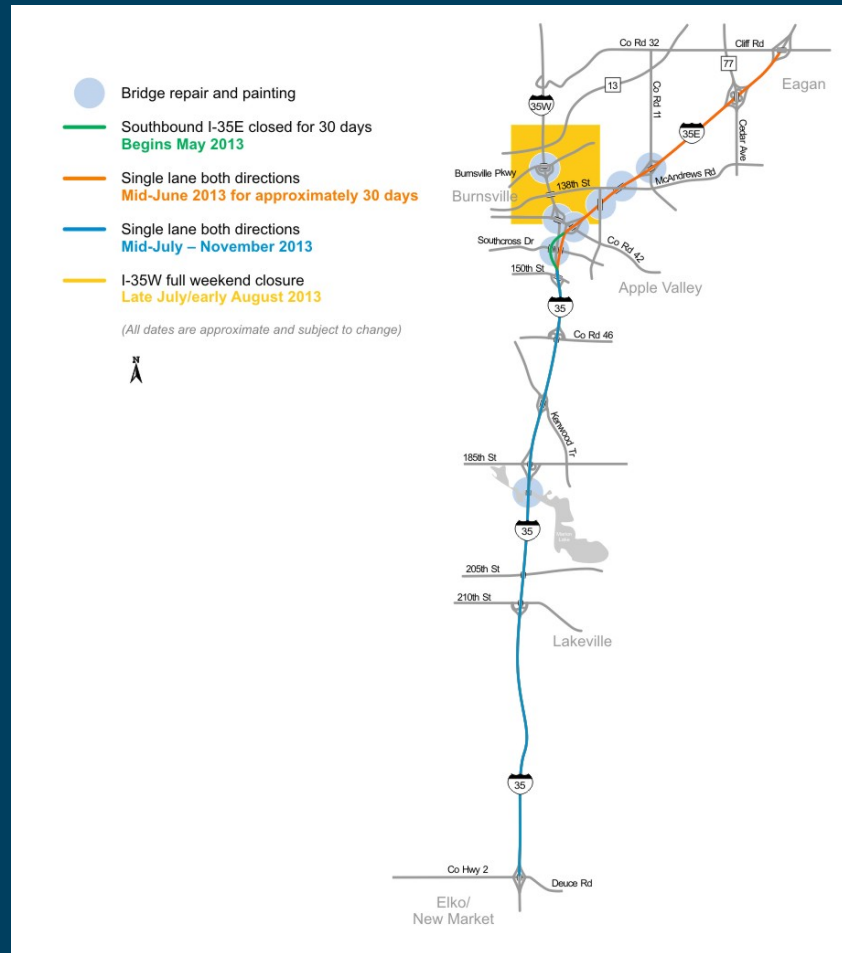
Summer 2013 I-35/35E Construction Projects



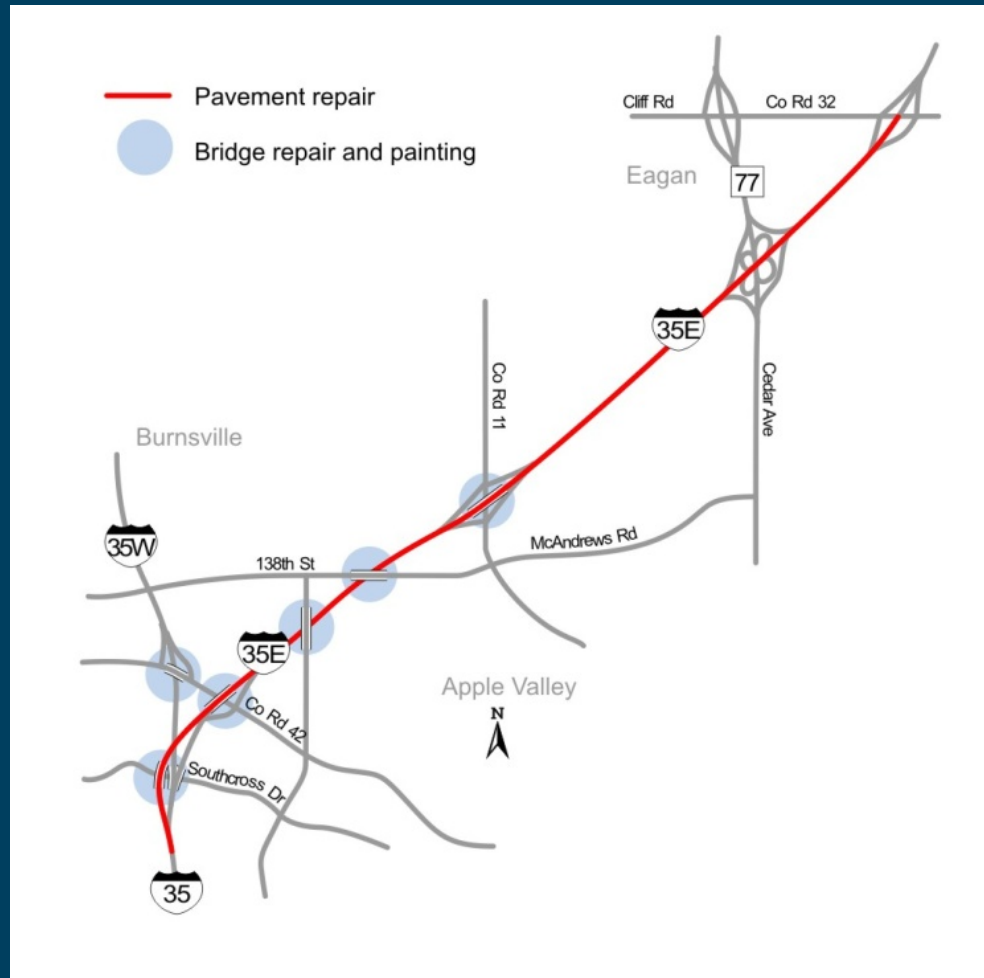
2013 South Area Construction Projects Last Updated March 5, 2013



Project Area



I-35E from Split to Cliff Road



I-35E from Split to Cliff Road

- ▶ Re-deck the I-35E Flyover Bridge (over 35W)
- ▶ Bridge Repair & Painting:
 - County Road 42
 - Portland Avenue
 - McAndrews Road
 - County Road 11
 - 3 Bridges over 35W (MN 13 & Burnsville Pkwy)
- ▶ Concrete Pavement Repair (CPR)
- ▶ Drainage work and update pedestrian crossings to meet ADA requirements (ramps)
- ▶ Add railing to McAndrews Road Bridge



I-35E Flyover Bridge Deck



Deck Removal/Demolition



Concrete Deck Pour



Concrete Pavement Repair



Traffic Impacts / Timeline

- ▶ May 2013: Southbound 35E Closed (30 days)
 - Closed between County Road 42 and Split
 - Detour is I-494 West to I-35W South
- ▶ Beginning of May 2013: 35W Weekend Closure
 - 35W Northbound closed for one weekend
 - 35W Southbound single overnight weekend closure
- ▶ June 1–15th: Build Crossovers for CPR work
- ▶ June 15th–July 15th: CPR and Ramp work
 - Single Lane of Traffic, all carried on either Northbound or Southbound
 - Short term ramp closures

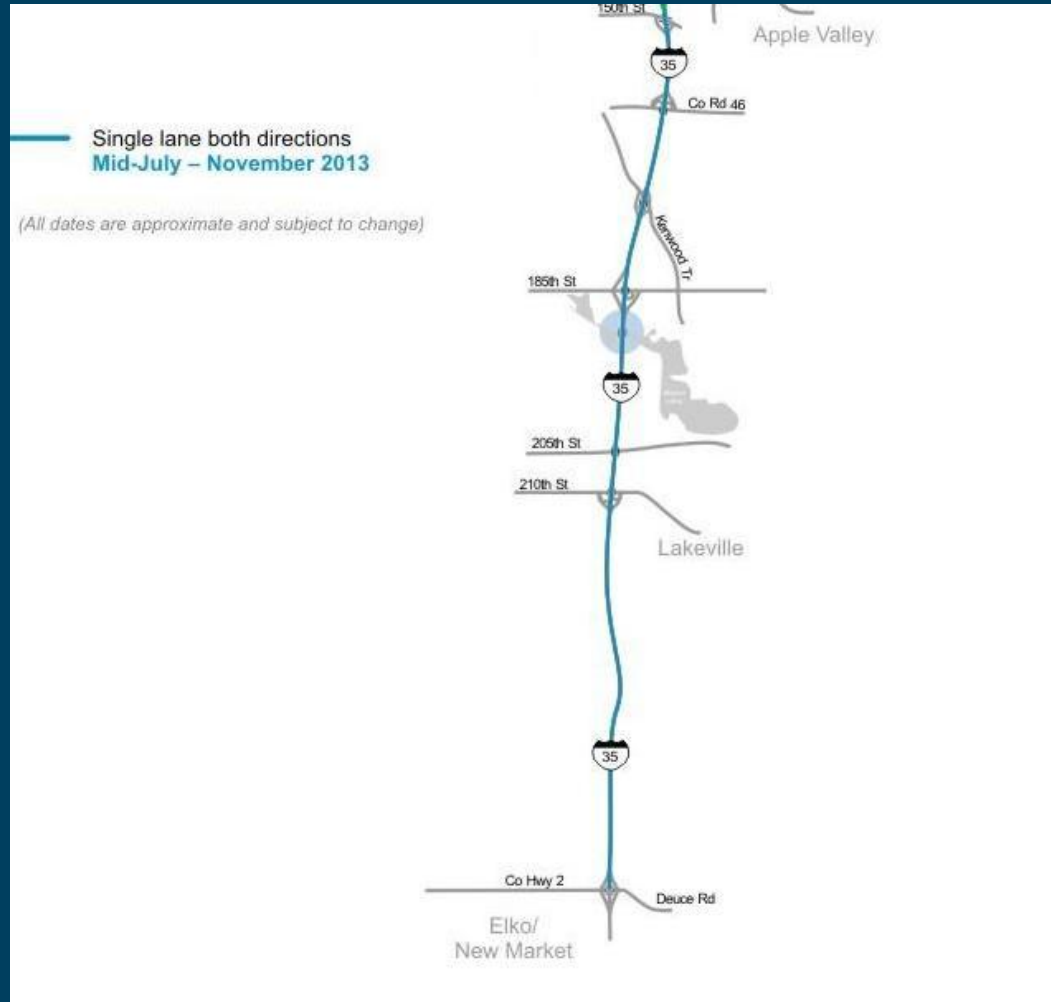


Traffic Impacts / Timeline

- ▶ Short term ramp closures
 - One week closure at Hwy 77 ramps (directionally)
- ▶ McAndrews Road Closed over 35E for 2–3 weeks for deck repairs and railing work
- ▶ One Weekend in August: 35W Closed
 - Closed between Hwy 13 and the Split
 - Detour is 494/35E



I-35 from Co Hwy 2 to Split



I-35 from Co Hwy 2 to Split

- ▶ Moving Ahead for Progress in the 21st Century (MAP-21) Project
- ▶ Advanced from FY 2017
- ▶ Unbonded Concrete Overlay
 - 0.3 mi N of Co Hwy 2 to Co Hwy 70
- ▶ Concrete Pavement Repair (CPR)
- ▶ Bridge Repair
- ▶ Diamond Grinding (improve ride smoothness)
- ▶ Install Cable Median Guardrail (Co Hwy 2 to Co Hwy 70)



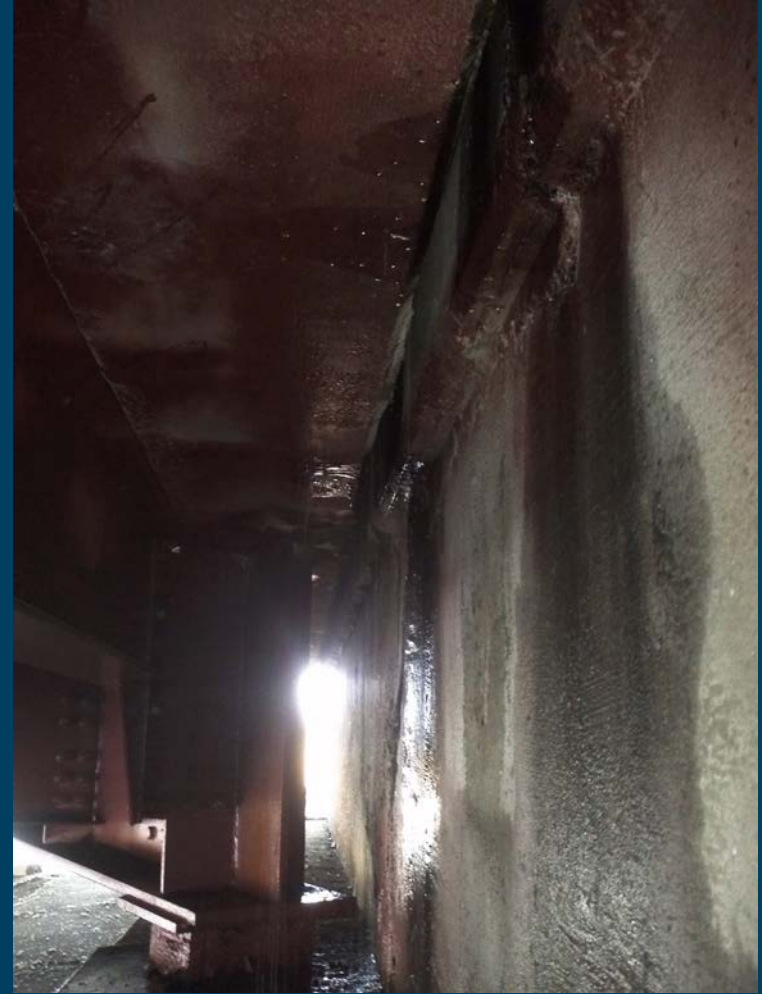
Concrete in need of repair



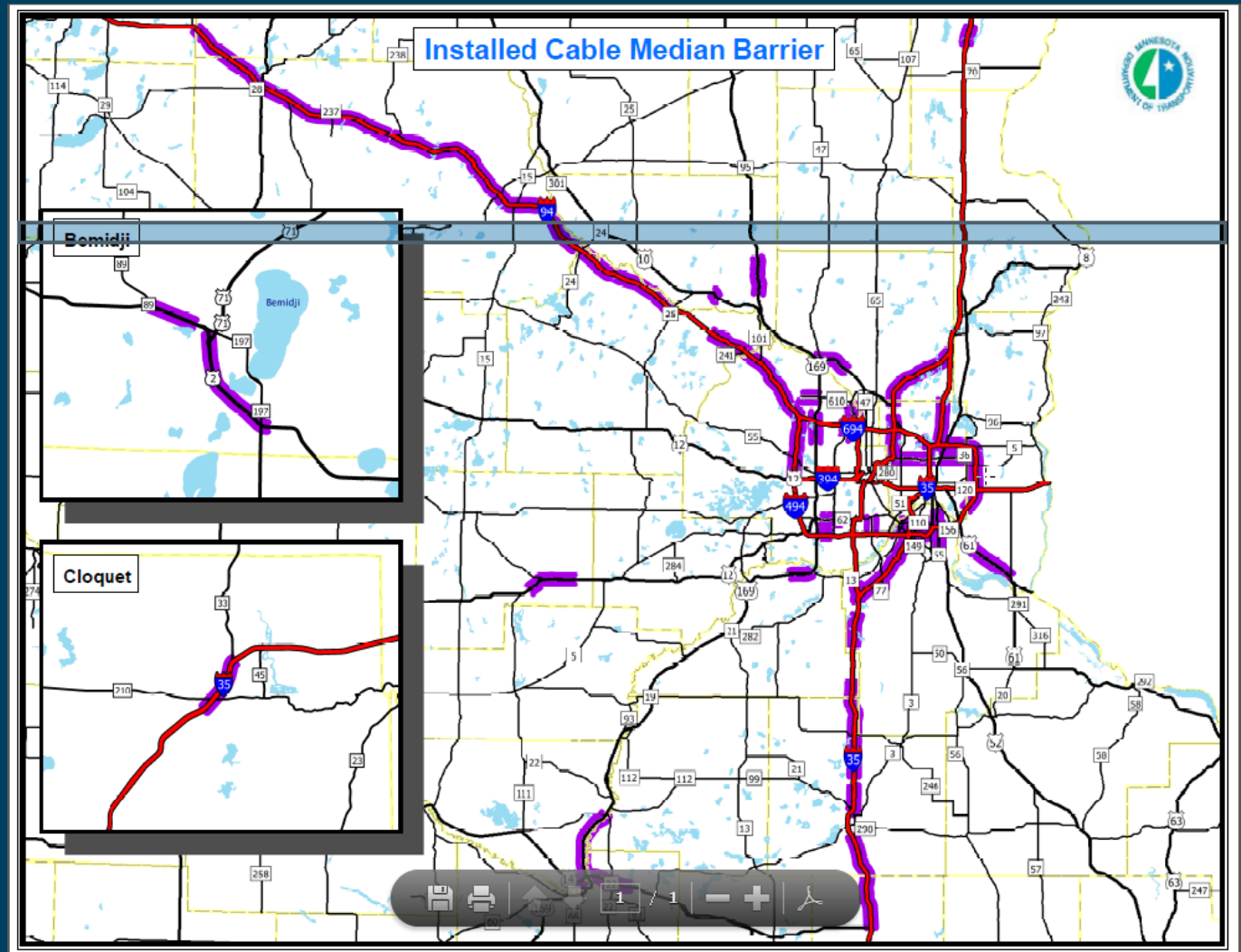
Unbonded Concrete Overlay



Bridge Repair – Joints



Cable Median Barrier



Traffic Impacts / Timeline

- ▶ Mid-July: Construct Crossovers
- ▶ Early Aug – Nov: CPR, Overlay, Bridge Repair
 - Single Lane in both directions from Co Hwy 2 to the Split



Traffic Impact Management Strategies

- ▶ Coordination with Local Projects
- ▶ Advanced Signing
- ▶ Intelligent Transportation Systems
 - Changeable Message Signs
 - Travel Times
- ▶ Innovative Contracting Methods
- ▶ Extended construction hours
- ▶ Reallocating travel lanes for peak periods
- ▶ User Behavior Survey
- ▶ Communications Plan



Advanced Signage





Communications Plan

I-35 and 35E resurface, repair and upgrades
2013

Your Destination...Our Priority



Public Affairs

PACs: Attend Pre-cons and weekly construction meetings

- ☐ *Gather, solicit and receive information about all construction projects*
- ☐ *Produce, prepare and disseminate useful, timely, intelligible, relevant information—news releases, web copy, Constant Contact; provide media interviews*



How does word get out?

- ▶ Project-Specific website
<http://www.dot.state.mn.us/metro/projects/i35eelkotoeagan/index.html>
- ▶ 511
- ▶ mndot.gov
- ▶ Facebook (facebook.com/mndot)
- ▶ Twitter (#mndottraffic)
- ▶ Email
- ▶ Traditional media (news releases)



What works well?

- Direct email updates push our message to the interested people
- Having local governments linking construction and overall traffic impacts information to their websites



Upcoming Events

- ▶ Elko New Market Chamber of Commerce scheduled for April 16, 2013 at the Elko New Market Library. 110 J. Roberts Way, Elko New Market.



Contacts

Kirsten Klein

South Area PAC/Business Liaison

Kirsten.klein@state.mn.us

(651) 234-7506

Sheila Kauppi, P.E.

South Area Manager

Sheila.kauppi@state.mn.us

(651) 234-7718

Jon Solberg

South Area Planner-Dakota County

651-234-7729

jon.solberg@state.mn.us

