

35W @ 94

MVTA TRANSIT IMPACTS

35W Solutions Alliance
Thursday, June 14, 2018

Minnesota Valley Transit Authority

Local and Express Bus Transit serving the South Metro Destinations include: Downtown Minneapolis, St. Paul, University of Minnesota, Mall of America, Minnesota Zoo, Burnsville Center, Ridges Hospital, Downtown Prior Lake & Shakopee and more...



- Founded in 1990
- 2nd largest public transit provider in MN
- 10,500+ daily boardings
- 22,500+ miles daily
- 164 buses
- 32 routes
- 14 facilities
- 340 daily Minneapolis trips



Free Wi-Fi • Real-Time "Where's my Bus?" Tracking



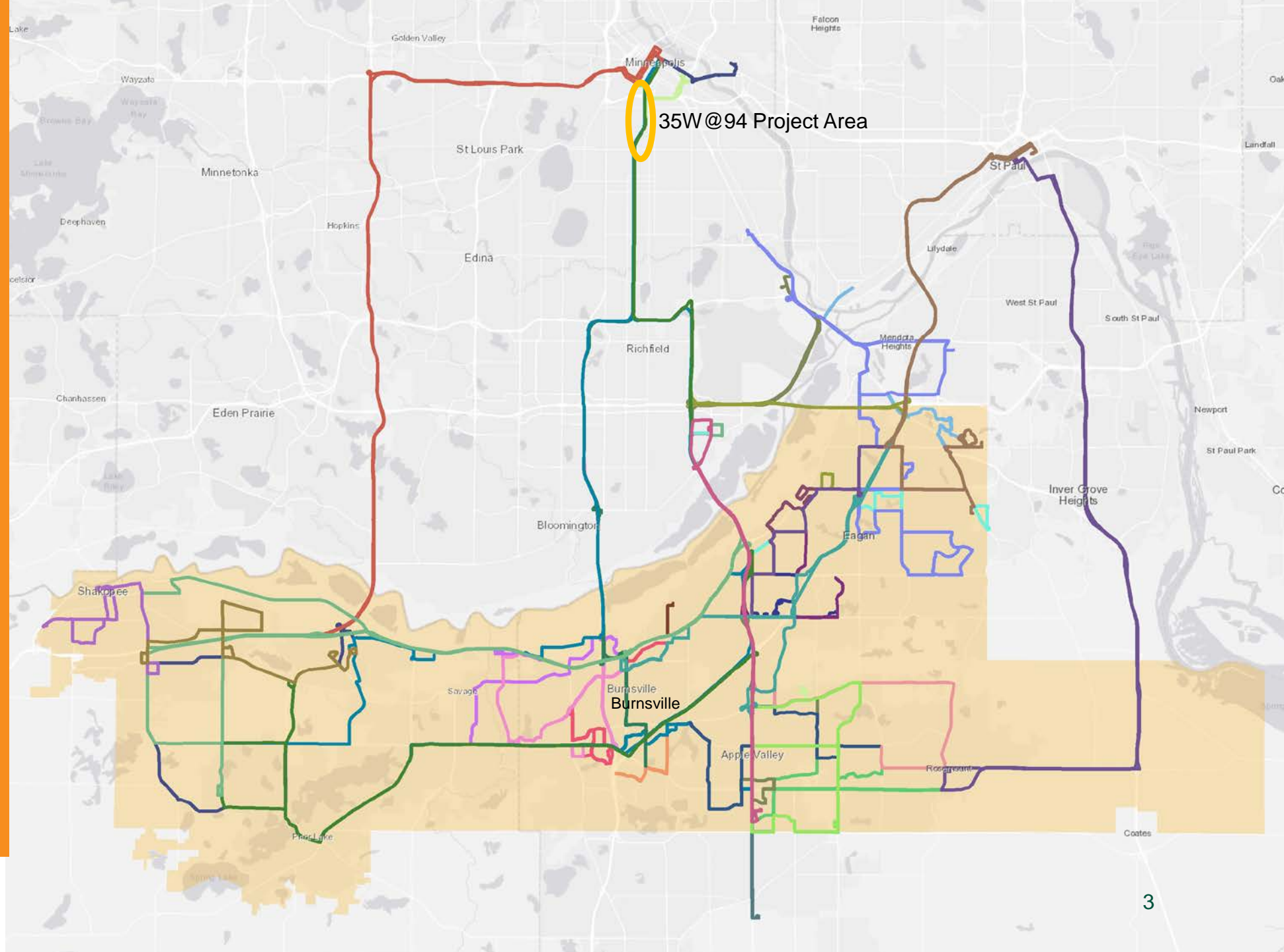
MVTA Routes

17 express

11 local

3 flex/shuttle

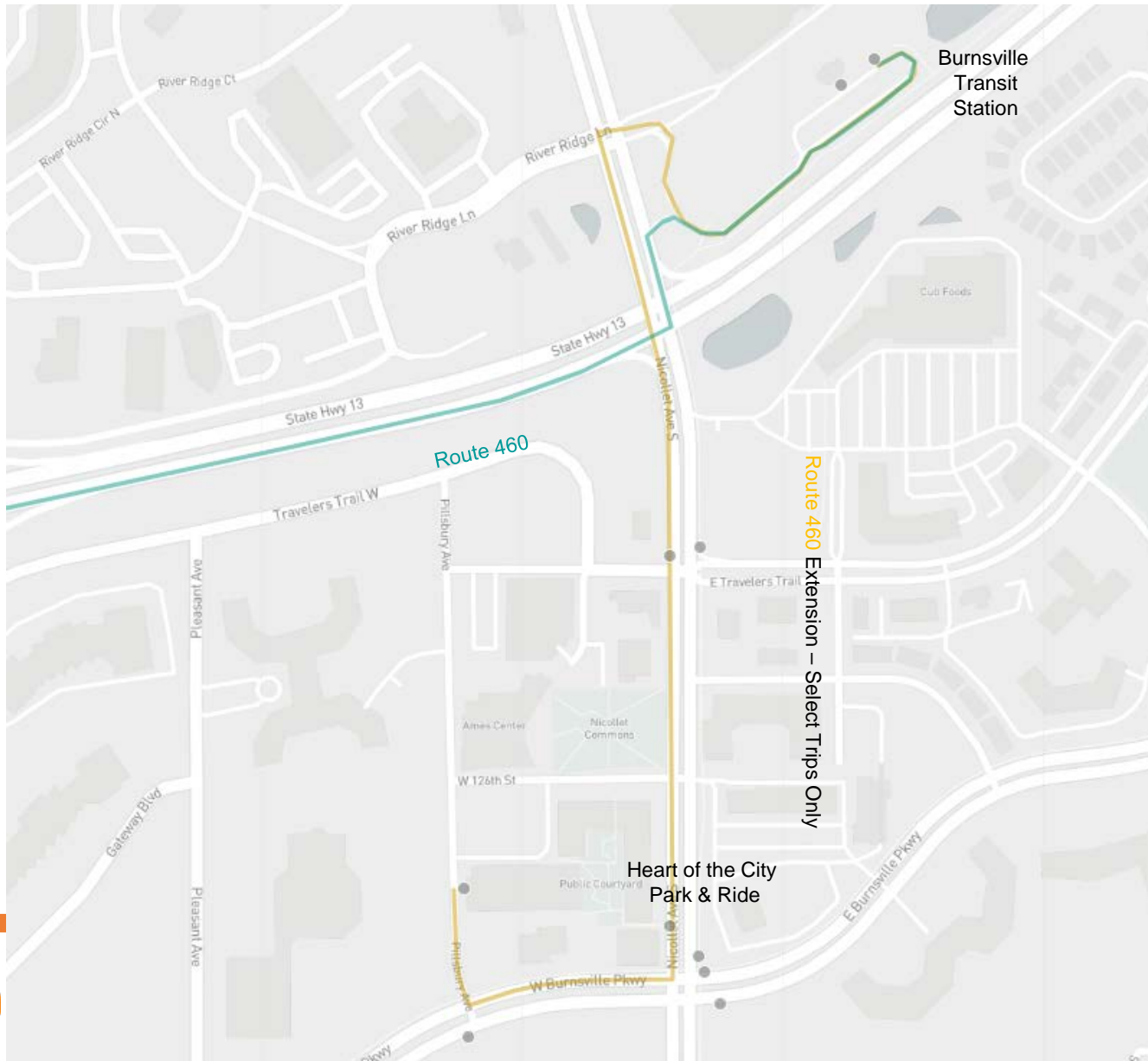
1 BRT



MVTA PRIORITIES

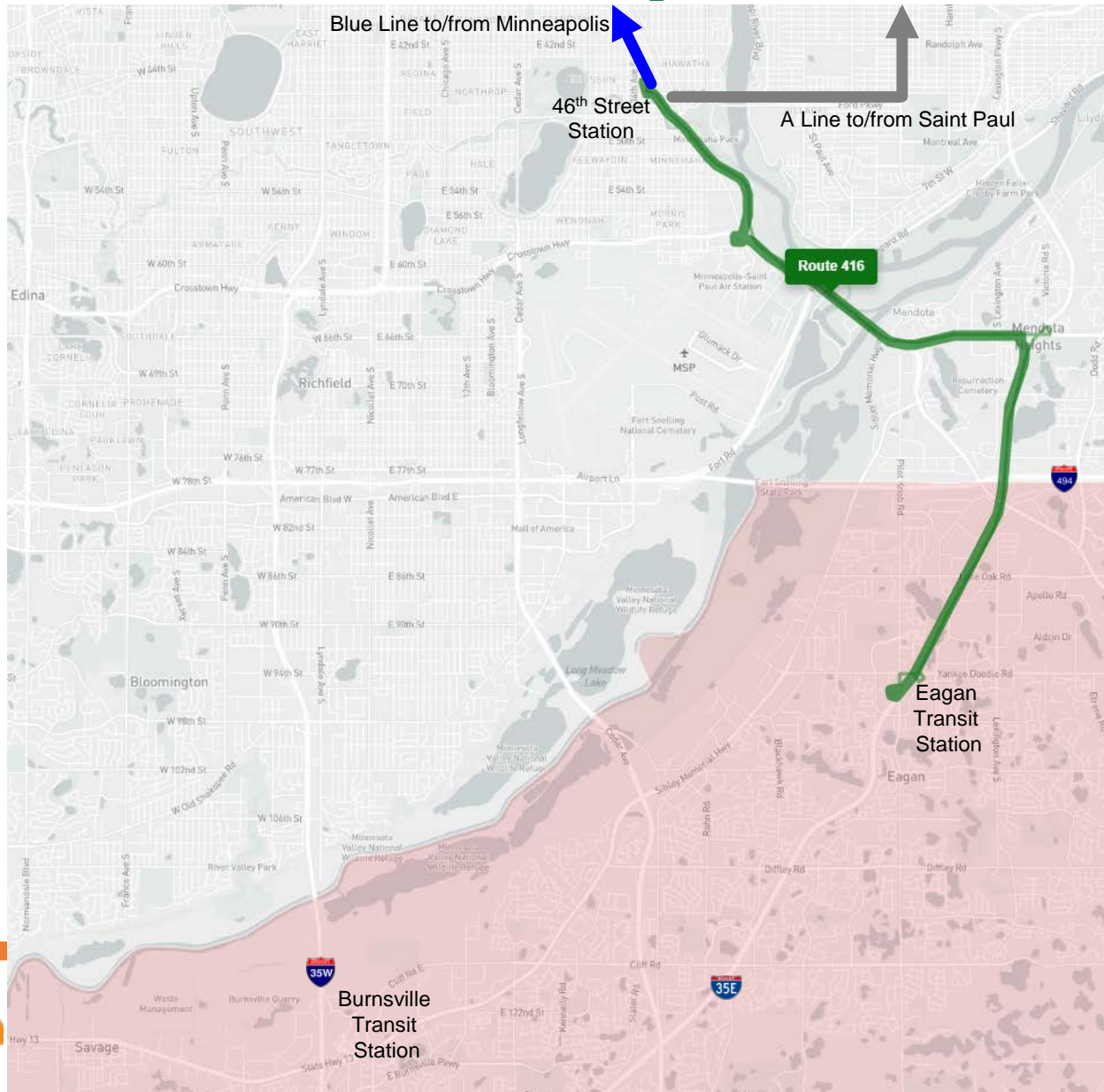
- Maintain **existing** service & **trip times**
- **Flexible detour** routing (I-35W, Hiawatha, I-35E, I-394)
 - Add vehicles by **extending retirement**
 - **Engage** riders & community
 - Add **recovery time** to express services
- Add capacity to existing **Route 460** (Burnsville-Minneapolis) trips
 - Add **new Route 416** (Eagan-46th Street LRT)

ROUTE 460 EXTENSION



- Select trips extended from Burnsville Transit Station to Heart of the City during peak
- Increases parking options
- Alleviates overcrowding at Burnsville Transit Station
- Takes advantage of existing trips with capacity

ROUTE 416 (EAGAN-46TH LRT)



- Weekday service direct between Eagan Transit Station and 46th Street LRT
- Approx. 6 am to 7pm
- Every 30 minutes peak and 60 minutes off-peak
- More reliable corridor
- Timed transfers via LRT to Minneapolis and A Line to St. Paul
- Offers option to avoid congestion at 35W/35E split

OUTREACH

- Customer Appreciation week of June 4th
- Take the bus!
- Begin planning transportation alternatives early
- Consider adjusting work hours
- Work remotely one day a week
- Consider connecting at MOA or Blue Line LRT
- Sign up for MVTA Route Alerts (mvta.com/route-alerts)
- Receive alerts from MnDOT (dot.state.mn.us/35w94)
- Contact MVTA Customer Service with trip planning questions ([952-882-7500](tel:952-882-7500))



INTERSTATE
35W

35W CONSTRUCTION
RIDE IT OUT WITH MVTA

**CUT DOWN ON THE STRESS OF 35W
CONSTRUCTION BY LETTING MVTA
DRIVE YOU DOWNTOWN AND BACK.**

The I-35W Downtown to Crosstown construction project will have a major impact on all road traffic beginning in 2018. Many routes will be detoured off 35W onto neighborhood streets and will experience significant construction delays.



MVTA 
Our Riders

MVTA
Minnesota Valley Transit Authority

Let us
drive you.

TRANSIT ADVANTAGES

- Transit advantages on Park & Portland in Minneapolis
 - Queue jumps at select intersections
- Transit/Emergency Vehicles only on 35W/31st Street Ramps
 - Enforcement will be critical
 - Through travel maintained on 35W during concurrent Minnesota River Bridge Construction
- Working closely with MnDOT, Metro Transit, & Metropolitan Council